


LOC I-EXW 108.3	APP CRS 259°	Rwy Idg 7815	TDZE 548
		Apt Elev 565	

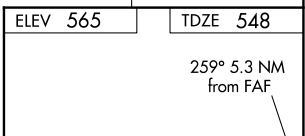
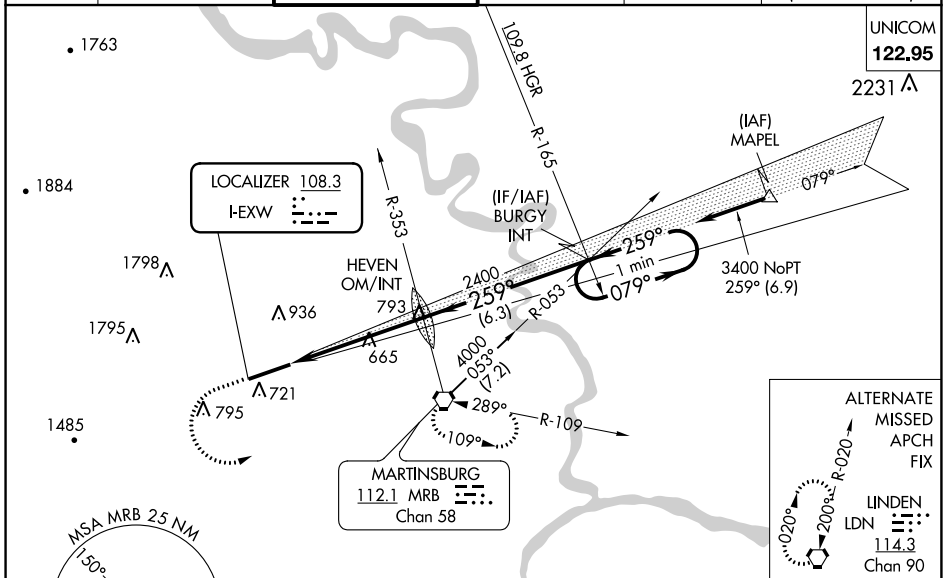
ILS or LOC RWY 26

EASTERN WV RGNL/SHEPHERD FLD (MRB)

⚠ For inoperative MALSRL, increase S-ILS 26 Cat E visibility to ¾ mile and S-LOC 26 Cat E visibility to 1¼ mile. When local altimeter setting not received, use Hagerstown altimeter setting and increase all DA 70 feet and all MDA 80 feet; increase S-LOC 26 Cat C, D, E and Circling Cat C and D visibility ¼ mile. For inoperative MALSRL when using Hagerstown altimeter setting increase S-ILS 26 visibility all Cats to 1 mile and S-LOC 26 Cat E visibility to 1½ mile.

MALSRL

MISSED APPROACH: Climb to 1100 then climbing left turn to 3300 direct MRB VORTAC and hold, continue climb-in-hold to 3300.

ASOS 119.925	POTOMAC APP CON 126.825 239.025	MARTINSBURG TOWER * 124.3 (CTAF) 233.7	GND CON 121.8 257.65	CLNC DEL 121.8 257.65	CLNC DEL 132.075 269.075 (When twr closed)
------------------------	---	--	--------------------------------	---------------------------------	---



1100	3300	MRB					
HEVEN OM/INT			BURGY INT		One Minute Holding Pattern		
2310			2400		3400		
5.3 NM			6.3 NM		5.3 NM		
CATEGORY	A	B	C	D	E		
S-ILS 26	748-½		200 (200-½)				
S-LOC 26	920-½		372 (400-½)	920-¾		372 (400-¾)	
CIRCLING	1100-1 535 (600-1)	1240-1 675 (700-1)	1240-2 675 (700-2)	1260-2¼ 695 (700-2¼)	2140-3 1575 (1600-3)		
						REIL Rwy 8	1
						HIRL Rwy 8-26	1
						FAF to MAP 5.3 NM	
Knots		60	90	120	150	180	
Min:Sec		5:18	3:32	2:39	2:07	1:46	

NE-4, 22 FEB 2024 to 21 MAR 2024

NE-4, 22 FEB 2024 to 21 MAR 2024