

VORTAC MRB <b>112.1</b> Chan <b>58</b>	APP CRS <b>290°</b>	Rwy Idg TDZE Apt Elev <b>N/A</b> <b>N/A</b> <b>565</b>
--	------------------------	---

# VOR-A

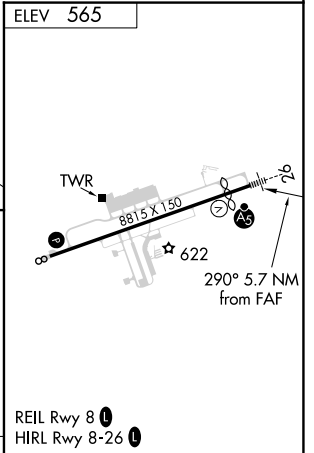
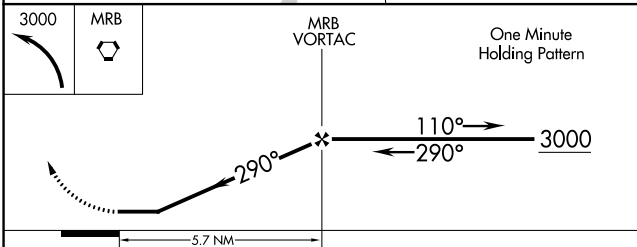
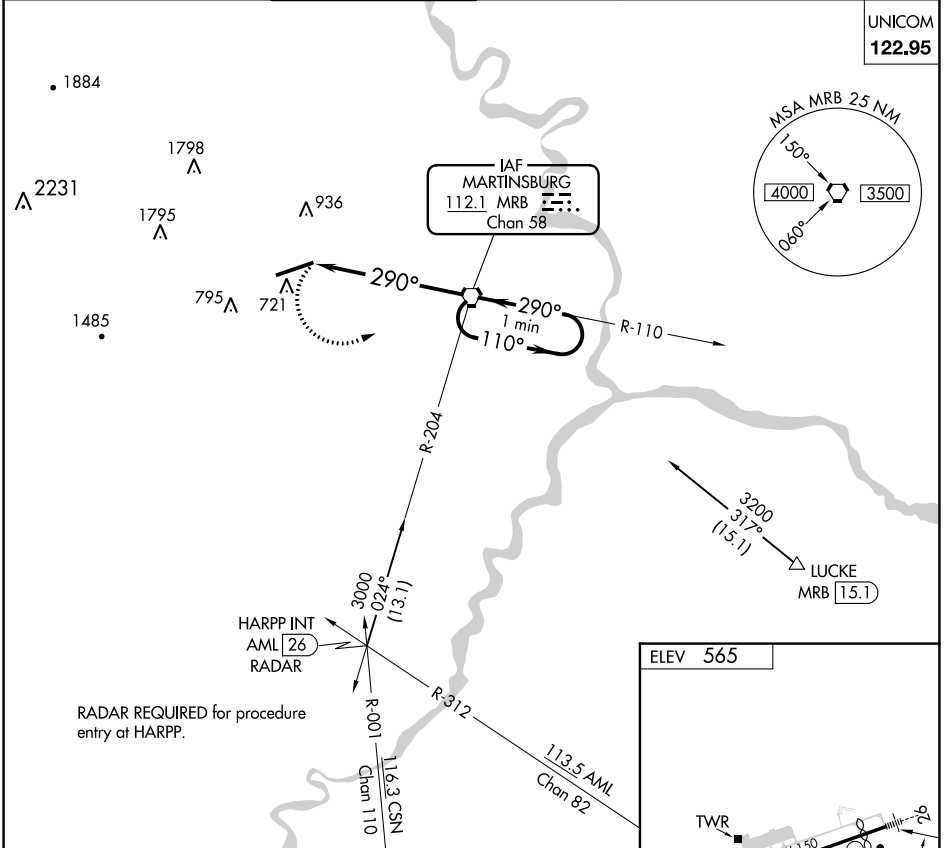
EASTERN WV RGNL/SHEPHERD FLD (MRB)

**⚠** When local altimeter setting not received, use Hagerstown altimeter setting and increase all MDA 80 feet and Cat C/D visibility ¼ mile.

**MISSED APPROACH:** Climbing left turn to 3000 direct MRB VORTAC and hold, continue climb in hold to 3000.

ASOS <b>119.925</b>	POTOMAC APP CON <b>126.825 239.025</b>	MARTINSBURG TOWER ★ <b>124.3</b> (CTAF) <b>233.7</b>	GND CON <b>121.8 257.65</b>	CLNC DEL <b>121.8 257.65</b>	CLNC DEL <b>132.075 269.075</b> (When twr closed)
------------------------	---	---	--------------------------------	---------------------------------	---

UNICOM  
**122.95**



CATEGORY	FAF to MAP 5.7 NM				
	A	B	C	D	E
<b>CIRCLING</b>	1120-1 555 (600-1)	1240-1 675 (700-1)	1240-2 675 (700-2)	1260-2¼ 695 (700-2¼)	2140-3 1575 (1600-3)
	Knots	60	90	120	150
	Min:Sec	5:42	3:48	2:51	2:17
		180	1:54		

# VOR-A

NE-4, 22 FEB 2024 to 21 MAR 2024

NE-4, 22 FEB 2024 to 21 MAR 2024