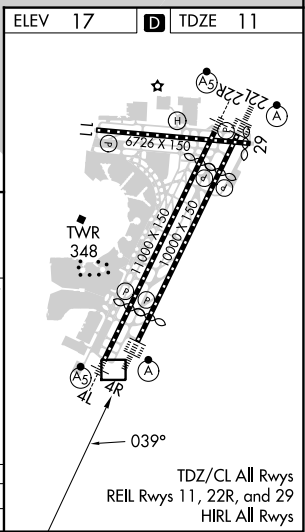
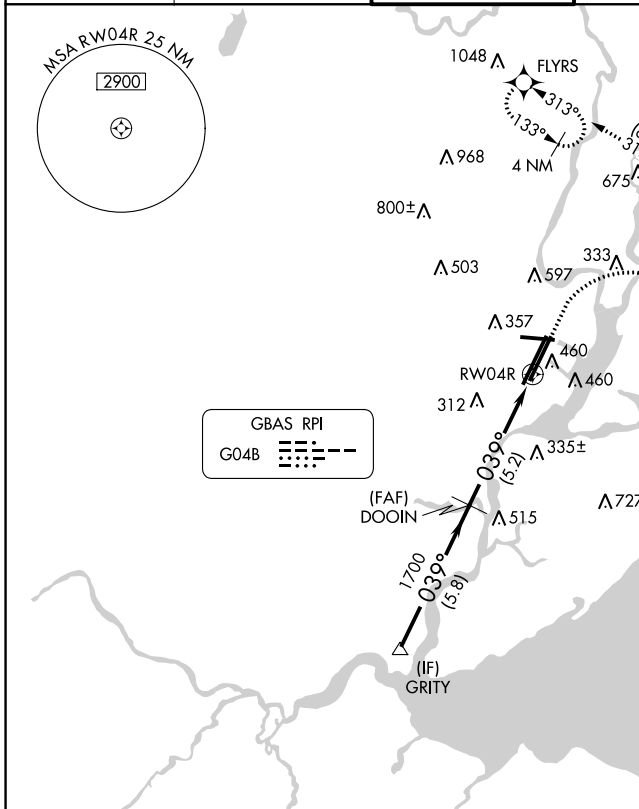


GBAS CH 21083 G04B	APP CRS 039°	Rwy Idg 8810 TDZE 11 Apt Elev 17
--	------------------------	---

GLS RWY 4R

NEWARK LIBERTY INTL (EWR)

RNP APCH - GPS. RADAR required.		ALSIF-2	MISSED APPROACH: (Do not exceed 210K until NEBTE) Climb to 560 then climbing right turn to 2000 direct TYNIE and on track 015° to NEBTE, cross NEBTE at or below 2000 then climbing left turn to 3000 on track 313° to FLYRS and hold, continue climb-in-hold to 3000.		
Autopilot coupled approach NA below 211.		(A)			
D-ATIS 115.7 134.825	NEW YORK APP CON 128.55 379.9	NEWARK TOWER 118.3 257.6	GND CON 121.8	CLNC DEL 118.85	CPDLC



GRITY	560	2000	TYNIE	tr 015°	NEBTE	3000	FLYRS
				tr 015°	2000	tr 313°	
VGSI and GLS glidepath not coincident (VGSI Angle 2.95/TCH 71).							
2800	039°		1700	DOOIN		RWY 4R	
GP 2.95°			1700				
TCH 55							
CATEGORY	A	B	C	D			
GLS DA	211/18		200 (200-1/2)				

NE-2, 22 FEB 2024 to 21 MAR 2024

NE-2, 22 FEB 2024 to 21 MAR 2024

GLS RWY 4R