

LOC/DME I-GPR <b>109.15</b> Chan 28 (Y)	APP CRS <b>107°</b>	Rwy ldg <b>6726</b> TDZE <b>17</b> Apt Elev <b>17</b>
---	------------------------	---

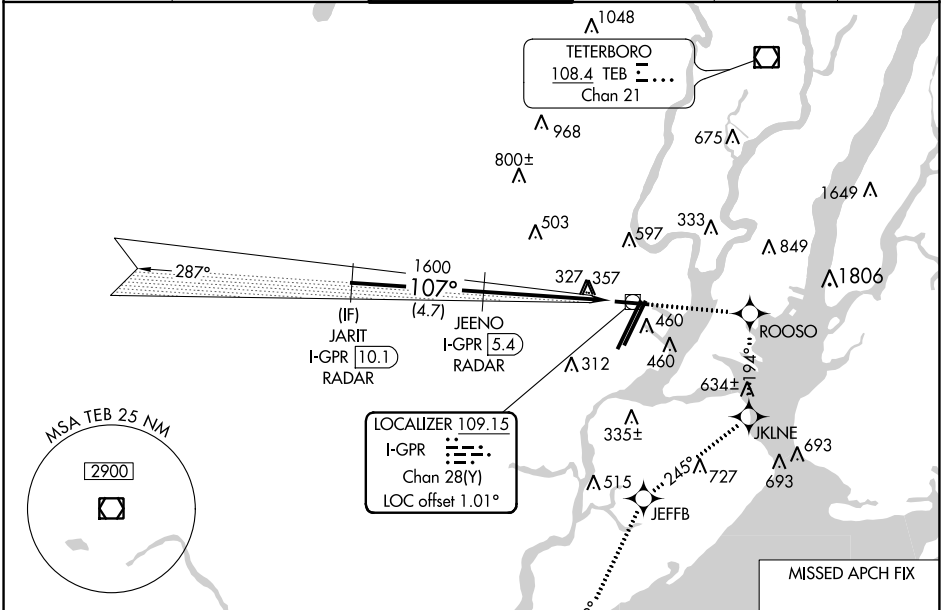
# ILS or LOC RWY 11

NEWARK LIBERTY INTL (EWR)

RNP APCH - GPS.  
DME required. RADAR required.  
 ⚠ Circling NA south of Rwy 11-29. When Circling to Rwy 29 at night, operational VGSJ required, remain on or above VGSJ glidepath until threshold. Rwy 11 helicopter visibility reduction below ¼ SM NA.

MISSED APPROACH: (Do not exceed 230K until JKLINE)  
Climb to 2000 direct ROOSO and right turn on track 194° to JKLINE and right turn on track 245° to JEFFB and left turn on track 218° to RAATO and hold.

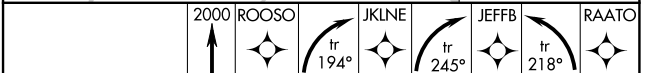
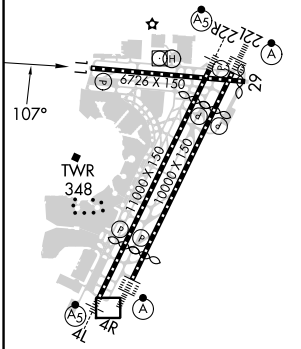
D-ATIS <b>115.7 134.825</b>	NEW YORK APP CON <b>128.55 379.9</b>	NEWARK TOWER <b>118.3 257.6</b>	GND CON <b>121.8</b>	CLNC DEL <b>118.85</b>	CPDLC
--------------------------------	---	------------------------------------	-------------------------	---------------------------	-------



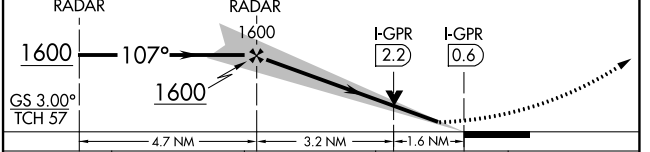
NE-2, 22 FEB 2024 to 21 MAR 2024

NE-2, 22 FEB 2024 to 21 MAR 2024

ELEV 17	<b>D</b>	TDZE 17
---------	----------	---------



JARIT I-GPR [10.1] RADAR  
 JEFENO I-GPR [5.4] RADAR  
 VGSJ and ILS glidepath not coincident (VGSJ Angle 3.00/TCH 60).



CATEGORY	A	B	C	D
S- ILS 11	618-1¾ 601 (700-1¾)			
S- LOC 11	660/55	643 (700-1)	660-1⅝ 643 (700-1⅝)	900-2½ 900-2¾
<b>C</b> CIRCLING	660-1	643 (700-1)	883 (900-2½)	883 (900-2¾)