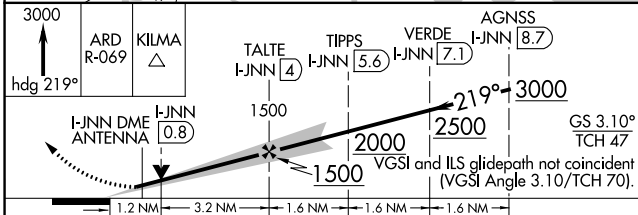
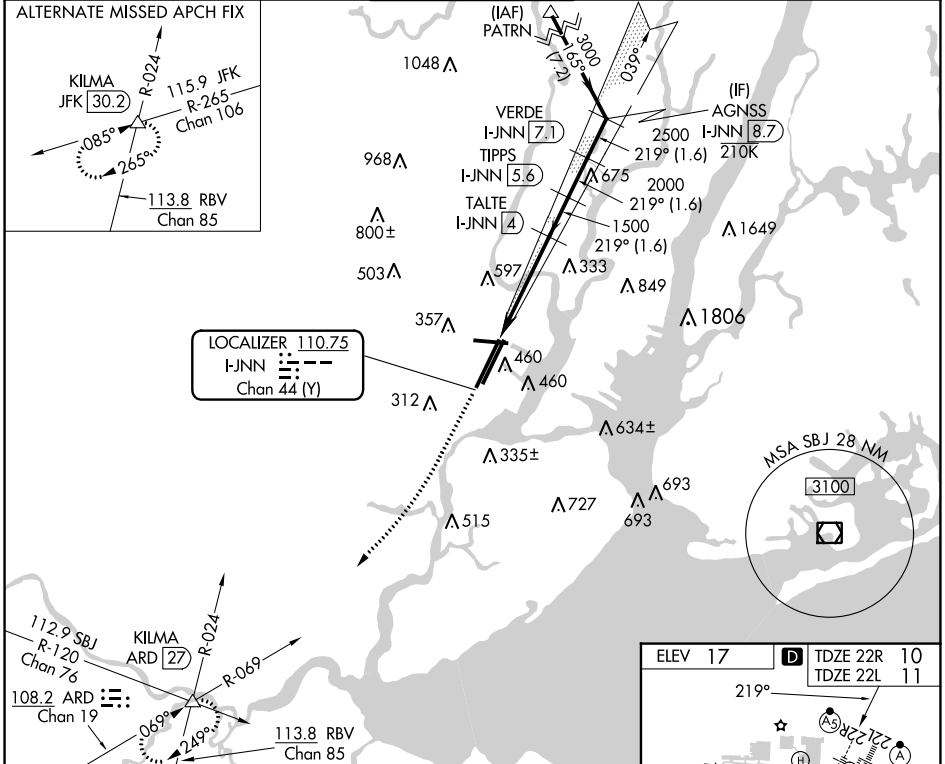


LOC/DME I-JNN <b>110.75</b> Chan 44 (Y)	APP CRS <b>219°</b>	Rwy Idg TDZE Apt Elev	22R <b>9560</b> <b>10</b> <b>17</b>	22L <b>8207</b> <b>11</b> <b>17</b>
---	------------------------	-----------------------------	--	--

# ILS or LOC RWY 22R

NEWARK LIBERTY INTL (EWR)

RNP APCH - GPS Aircraft not GPS equipped - RADAR required for procedure entry. DME required.		22R MALS R	22L ALSF-2	MISSED APPROACH: Climb to 3000 on heading 219° and ARD VOR/DME R-069 to KILMA INT/ARD 27 DME and hold.	
<p>▼ Circling NA south of Rwy 11-29. When Circling to Rwy 29 at night, operational VGSI required, remain on or above VGSI glidepath until threshold. For inop ALS, increase S-LOC 22R Cat C/D visibility to 1 1/2 SM.</p> <p>▲</p>		(AS)	(A)		
D-ATIS <b>115.7</b>	NEW YORK APP CON <b>134.825</b>	NEW YORK APP CON <b>128.55</b>	NEW YORK APP CON <b>379.9</b>	NEWARK TOWER <b>118.3</b>	NEWARK TOWER <b>257.6</b>
		GND CON <b>121.8</b>	CLNC DEL <b>118.85</b>	CPDLC	



ELEV 17	<b>D</b> TDZE 22R 10	TDZE 22L 11			
TDZ/CL Rwy 4L, 4R, 11, 22L, 22R, and 29 REIL Rwy 11, 22R, and 29 HIRL Rwy 4L-22R, 4R-22L, and 11-29 FAF to MAP 4.4 NM					
Knots	60	90	120	150	180
Min:Sec	4:24	2:56	2:12	1:46	1:28

NE-2, 22 FEB 2024 to 21 MAR 2024

NE-2, 22 FEB 2024 to 21 MAR 2024