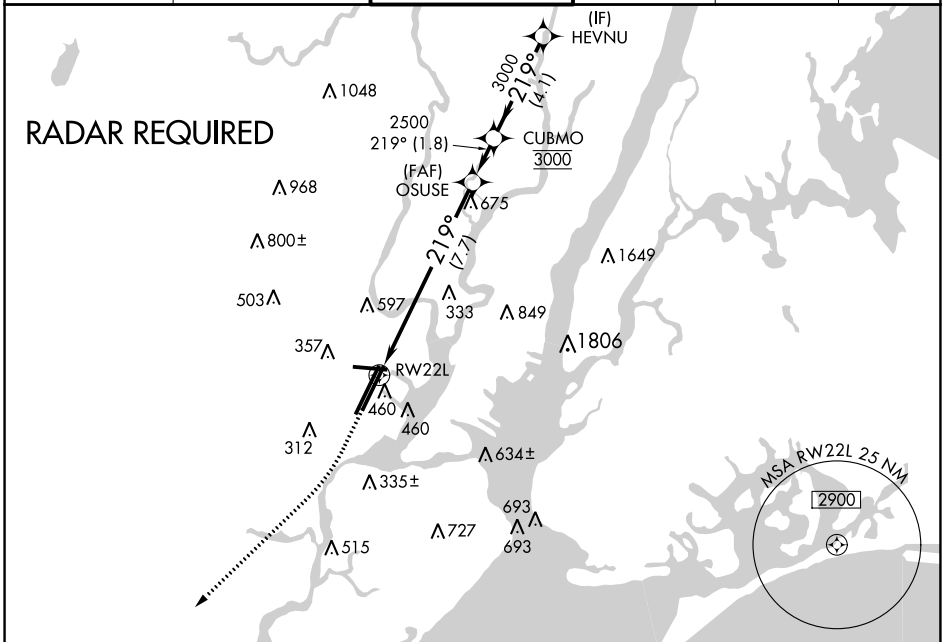


APP CRS 219°	Rwy Idg 8207
	TDZE 11
	Apt Elev 17

RNAV (RNP) Y RWY 22L

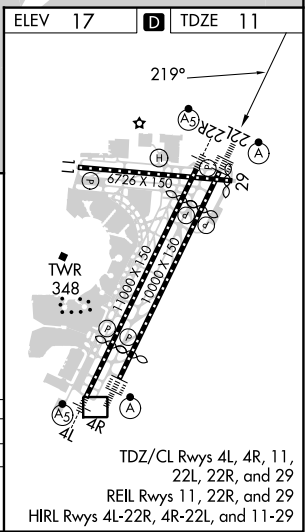
NEWARK LIBERTY INTL (EWR)

RNP AR APCH - GPS.		ALSIF-2 	MISSED APPROACH: Climb to 600 then climbing right turn to 3000 direct KILMA and hold.		
For uncompensated Baro-VNAV systems, procedure NA below -13°C or above 54°C.					
D-ATIS 115.7 134.825	NEW YORK APP CON 128.55 379.9	NEWARK TOWER 118.3 257.6	GND CON 121.8	CLNC DEL 118.85	CPDLC



NE-2, 22 FEB 2024 to 21 MAR 2024

NE-2, 22 FEB 2024 to 21 MAR 2024



600	3000	KILMA	VGSI and RNAV glidepath not coincident (VGSI Angle 3.00/TCH 60).

	OSUSE	CUBMO	HEVNU
RW22L	2500	3000	219° 3000
	2500	3000	GP 3.00° TCH 43
	7.7 NM	1.8 NM	4.1 NM

CATEGORY	A	B	C	D
RNP 0.30 DA	462/50		451 (500-1)	

AUTHORIZATION REQUIRED