

APP CRS	Rwy Idg	6502
288°	TDZE	10
	Apt Elev	18

RNAV (RNP) Y RWY 29

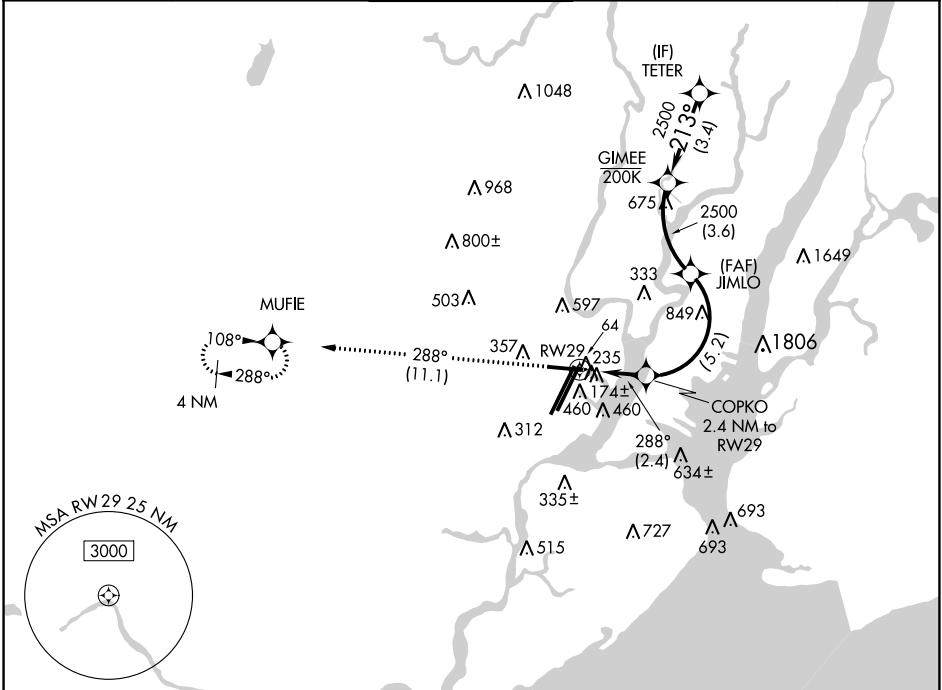
NEWARK LIBERTY INTL (EWR)

RNP AR APCH. RF required.

▼ Straight-in Rwy 29 at night, operational VGSI required, remain on or above VGSI glidepath until threshold. For uncompensated Baro-VNAV systems, procedure NA below -12°C or above 54°C.
▲ NA **Missed approach requires a minimum climb of 417 feet per NM to 800.

MISSED APPROACH: Climb to 2000 on track 288° to MUFIE and hold.

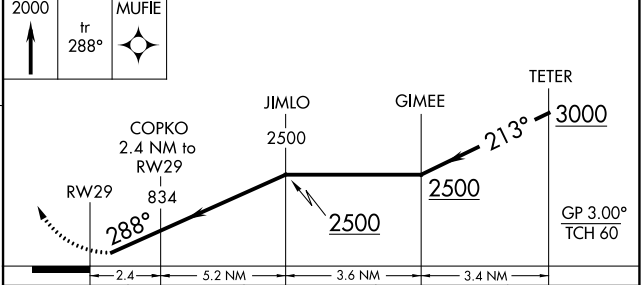
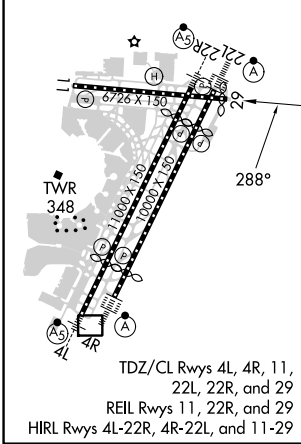
D-ATIS	NEW YORK APP CON	NEWARK TOWER	GND CON	CLNC DEL	CPDLC
115.7 134.825	128.55 379.9	118.3 257.6	121.8	118.85	



NE-2, 22 FEB 2024 to 21 MAR 2024

NE-2, 22 FEB 2024 to 21 MAR 2024

ELEV	18	D	TDZE	10
------	-----------	----------	------	-----------



CATEGORY	A	B	C	D
RNP 0.16 DA		461-1½	451 (500-1½)	
RNP 0.30 DA		** 530-1¾	520 (600-1¾)	
RNP 0.30 DA		573-1⅞	563 (600-1⅞)	

AUTHORIZATION REQUIRED