

RNAV (GPS) Y RWY 4R

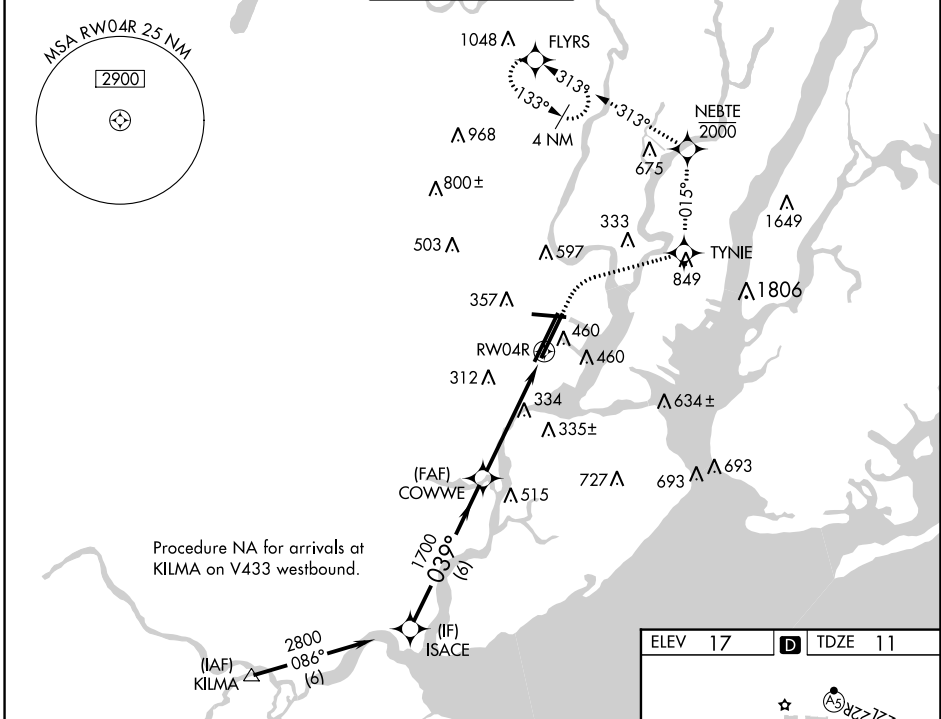
NEWARK LIBERTY INTL (EWR)

WAAS CH 60924 W04B	APP CRS 039°	Rwy Idg 8810 TDZE 11 Apt Elev 17
----------------------------------------	------------------------	-------------------------------------------------------------

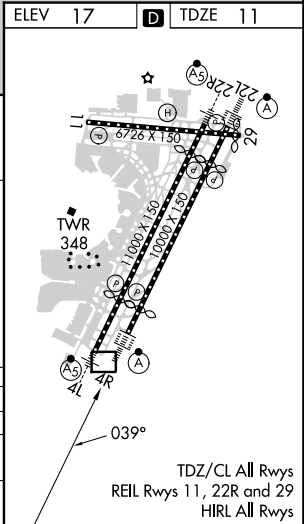
RNP APCH - GPS.
RADAR required.
⚠ When Circling to Rwy 29 at night, operational VGSI required, remain on or above VGSI glidepath until threshold.

ALSIF-2
MISSED APPROACH: (Do not exceed 210K until NEBTE) Climb to 550 then climbing right turn to 2000 direct TYNIE and left turn on track 015° to NEBTE, cross NEBTE at or below 2000 then climbing left turn to 3000 on track 313° to FLYRS and hold, continue climb-in-hold to 3000.

D-ATIS 115.7 134.825	NEW YORK APP CON 128.55 379.9	NEWARK TOWER 118.3 257.6	GND CON 121.8	CLNC DEL 118.85	CPDLC
--------------------------------	-----------------------------------------	------------------------------------	-------------------------	---------------------------	-------



	550	2000	TYNIE	NEBTE	3000	FLYRS
	↑	↷	⬠	⬠	↶	⬠
			tr 015°	2000	tr 313°	
VGSI and RNAV glidepath not coincident (VGSI Angle 2.95/TCH 71).						
ISACE	2800	039°	1700	1700	1.7 NM to RW04R	RW04R
GP 3.04°						
TCH 55						
	6 NM		3.4 NM	1.7		
CATEGORY	A	B	C	D		
LPV DA	211/18		200 (200-1/2)			
LNAV MDA	600/24	589 (600-1/2)	600-1 1/4	589 (600-1 1/4)		
CIRCLING	760-1	743 (800-1)	900-2 3/4	883 (900-2 3/4)	900-3	883 (900-3)



NE-2, 22 FEB 2024 to 21 MAR 2024

NE-2, 22 FEB 2024 to 21 MAR 2024