

WAAS CH <b>61302</b> W18A	APP CRS <b>177°</b>	Rwy Idg <b>5510</b> TDZE <b>8</b> Apt Elev <b>8</b>
---------------------------------	------------------------	---

# RNAV (GPS) RWY 18R

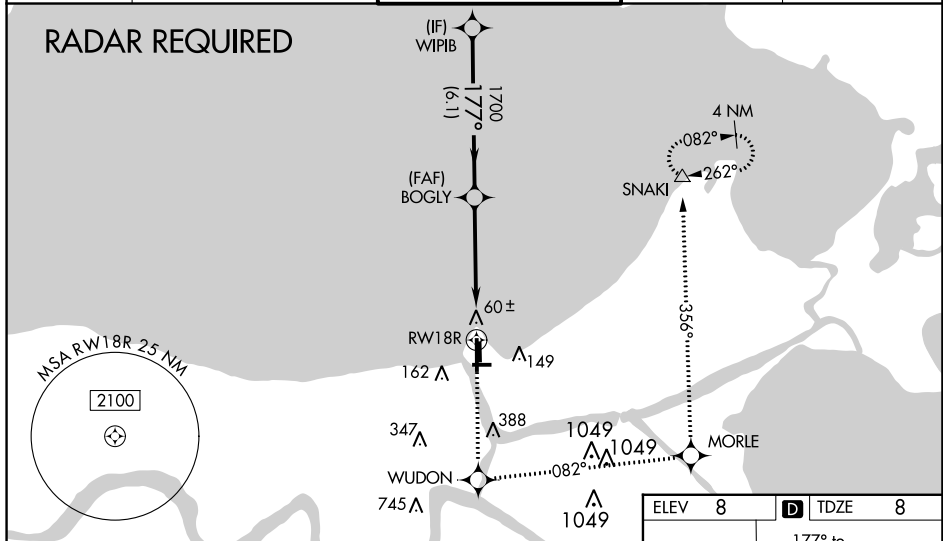
LAKEFRONT (NEW)

**⚠** Inoperative table does not apply to LPV all Cats. For inoperative MALSR, increase LNAV Cat A and B visibility to 1 mile. Baro-VNAV NA when using Louis Armstrong New Orleans Intl altimeter setting. For uncompensated Baro-VNAV systems, LNAV/VNAV NA below -1.5°C (5°F) or above 49°C (120°F). DME/DME RNP-0.3 NA. Visibility reduction by helicopters NA. When local altimeter setting not received; use Louis Armstrong New Orleans Intl altimeter setting and increase all DA 29 feet and all MDA 40 feet; increase LNAV/VNAV all Cats and LNAV and Circling Cat C and D visibility ¼ mile. VDP NA with Louis Armstrong New Orleans Intl altimeter setting. For inoperative MALSR when using Louis Armstrong New Orleans Intl altimeter setting, increase LNAV Cat A and B visibility to 1 mile.



**MISSED APPROACH:**  
Climb to 2100 direct WUDON and left turn on track 082° to MORLE and on track 356° to SNAKI and hold.

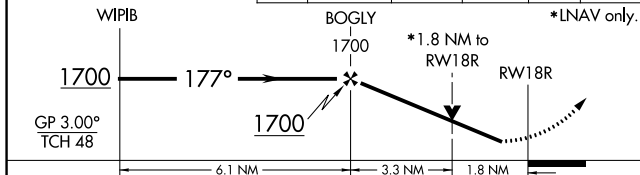
ATIS <b>124.9</b>	NEW ORLEANS APP CON NORTH <b>133.15 290.3</b> SOUTH <b>123.85 256.9</b>	LAKEFRONT TOWER * <b>118.95(CTAF)</b> <b>0</b>	GND CON <b>121.7</b>	CLNC DEL <b>127.4</b>
----------------------	---	---	-------------------------	--------------------------



SC-4, 22 FEB 2024 to 21 MAR 2024

SC-4, 22 FEB 2024 to 21 MAR 2024

Procedure Turn NA	2100 ↑	WUDON ⊙	tr 082°	MORLE ⊙	tr 356°	SNAKI △
----------------------	-----------	------------	------------	------------	------------	------------



CATEGORY	A	B	C	D
LPV DA		258-¾	250 (300-¾)	
LNAV/DA/VNAV		521-1¼	513 (600-1¼)	
LNAV MDA	640-¾	632 (700-¾)	640-1¼ 632 (700-1¼)	640-1½ 632 (700-1½)
CIRCLING	640-1	632 (700-1)	700-2 692 (700-2)	820-2¾ 812 (900-2¾)

