

# HI-ILS or LOC RWY 25

LOC I-PMD <b>110.7</b>	APCH CRS <b>254°</b>	Rwy Idg <b>12,002</b> TDZE <b>2503</b> Arpt Elev <b>2543</b>
---------------------------	-------------------------	--

AL-310 [USAF]

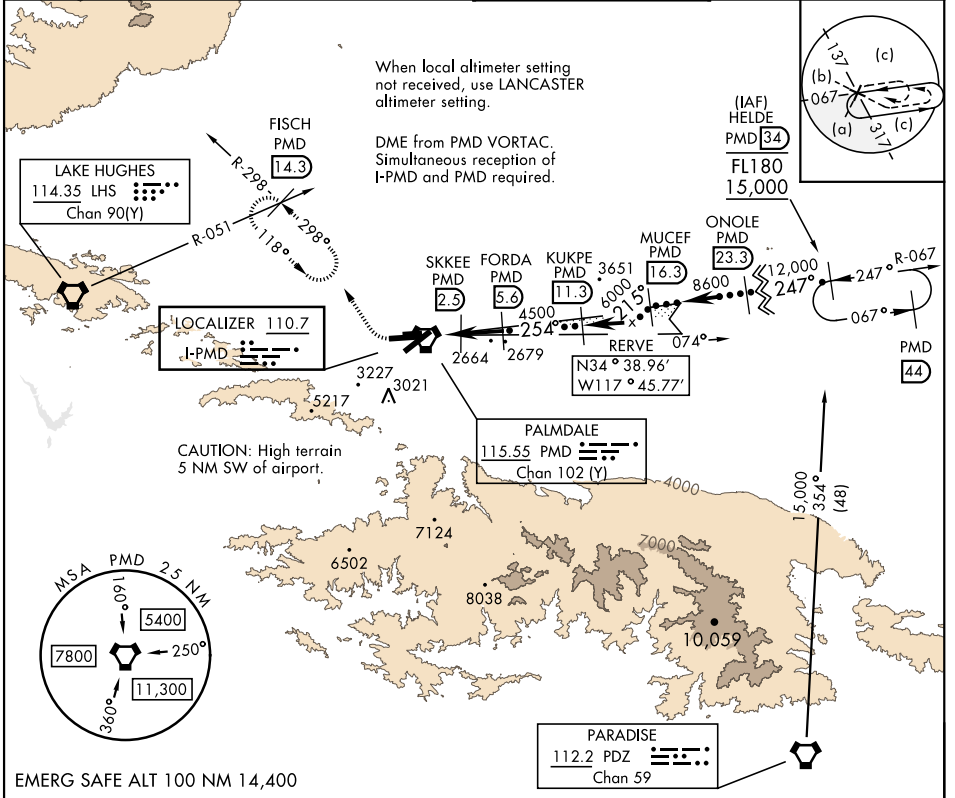
PALMDALE USAF PLANT 42 (KPMD)

DME required.

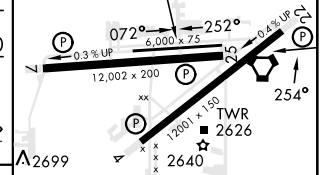
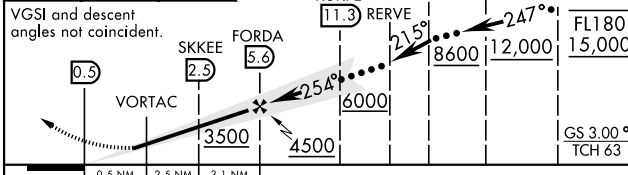
**▲** \* Circling NA south of Rws 4 and 25.

MISSED APPROACH: Climb to 3000 then climbing right turn on heading 318° and PMD VORTAC R-298 to FISCH INT/PMD 14.3 DME/RADAR and hold, continue climb-in-hold to 6700.

ATIS <b>118.275</b>	JOSHUA APP CON <b>124.55 363.0</b>	TOWER* <b>123.7 (CTAF) 317.6</b>	GND CON <b>121.9 317.6</b>
------------------------	---------------------------------------	-------------------------------------	-------------------------------



3000	6700	PMD R-298	ELEV 2543	TDZE 2503
------	------	-----------	-----------	-----------



CATEGORY	C	D	E
S-ILS 25		2703-¾	200 (200-¾)
S-LOC 25		2820-7/8	317 (300-7/8)
CIRCLING*	3140-1½ 597 (600-1½)	3740-3 1197 (1200-3)	3760-3 1217 (1300-3)

FAF to MAP 6.1 NM					
Knots	60	90	120	150	180
Min:Sec	6:06	4:04	3:03	2:26	2:02

# HI-ILS or LOC RWY 25

SW-3, 22 FEB 2024 to 21 MAR 2024

SW-3, 22 FEB 2024 to 21 MAR 2024