

HI-TACAN RWY 25

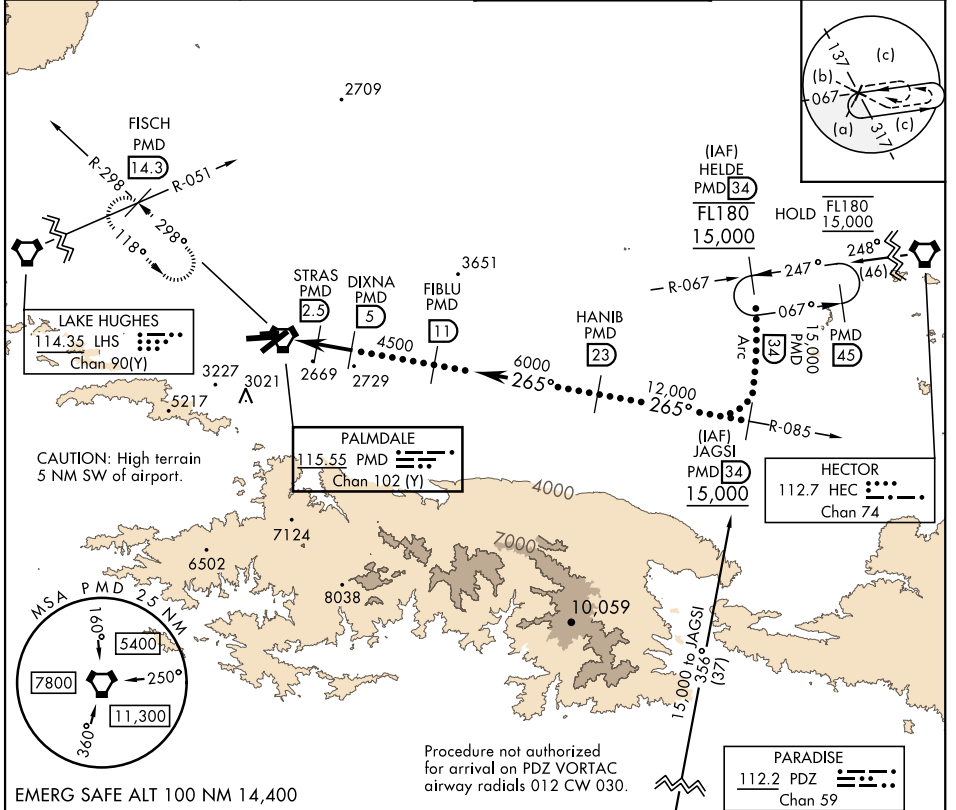
TACAN PMD Chan 102 (Y)	APCH CRS 265°	Rwy Idg 12,002 TDZE 2503 Arprt Elev 2543
----------------------------------	-------------------------	---

AL-310 [USAF]

PALMDALE USAF PLANT 42 (KPMD)

<p>▽ * Circling NA S of Rwy 4 and 25.</p> <p>▲</p>	<p>MISSED APPROACH: Climb to 3000 then climbing right turn to 6700 on heading 318° on PMD VORTAC R-298 to FISCH INT/PMD 14.3 DME/RADAR and hold, continue climb-in-hold to 6700.</p>
--	--

<p>ATIS 118.275</p>	<p>JOSHUA APP CON 124.55 363.0</p>	<p>TOWER★ 123.7 (CTAF) 0 317.6</p>	<p>GND CON 121.9 317.6</p>
--------------------------------	---	---	---------------------------------------



<p>3000</p> <p>6700</p> <p>↑</p> <p>Hdg 318°</p> <p>VGSI and descent angles not coincident.</p>	<p>VORTAC</p> <p>EKOTY [0.3]</p> <p>STRAS [2.5]</p> <p>DIXNA [5]</p> <p>FIBLU [11]</p> <p>HANIB [23]</p> <p>JAGSI R-085 [34]</p> <p>HELDE R-067 [34]</p> <p>FL180 [34]</p> <p>15,000</p> <p>12,000</p> <p>6000</p> <p>4500</p> <p>3500</p> <p>3,000°</p> <p>TCH 58</p> <p>Arc [34]</p>									
<p>0.8</p> <p>2.2 NM</p> <p>2.5 NM</p>	<p>EMERG SAFE ALT 100 NM 14,400</p>									
<p>CATEGORY</p> <p>S-25</p> <p>CIRCLING*</p>	<table border="1"> <tr> <th>C</th> <th>D</th> <th>E</th> </tr> <tr> <td>2840-1</td> <td>337 (400-1)</td> <td></td> </tr> <tr> <td>3140-1½ 597 (600-1½)</td> <td>3740-3 1197 (1200-3)</td> <td>3760-3 1217 (1300-3)</td> </tr> </table>	C	D	E	2840-1	337 (400-1)		3140-1½ 597 (600-1½)	3740-3 1197 (1200-3)	3760-3 1217 (1300-3)
C	D	E								
2840-1	337 (400-1)									
3140-1½ 597 (600-1½)	3740-3 1197 (1200-3)	3760-3 1217 (1300-3)								

ELEV 2543	TDZE 2503
<p>ASSAULT STRIP</p>	
<p>HIRL Rwy 4-22, 7-25 0</p> <p>REIL Rwy 4, 22, 7, 25 0</p>	

HI-TACAN RWY 25

SW-3, 22 FEB 2024 to 21 MAR 2024

SW-3, 22 FEB 2024 to 21 MAR 2024