

WAAS CH 86520 W25A	APP CRS 254°	Rwy Idg TDZE Apt Elev	12002 2503 2543
--	------------------------	-----------------------------	--

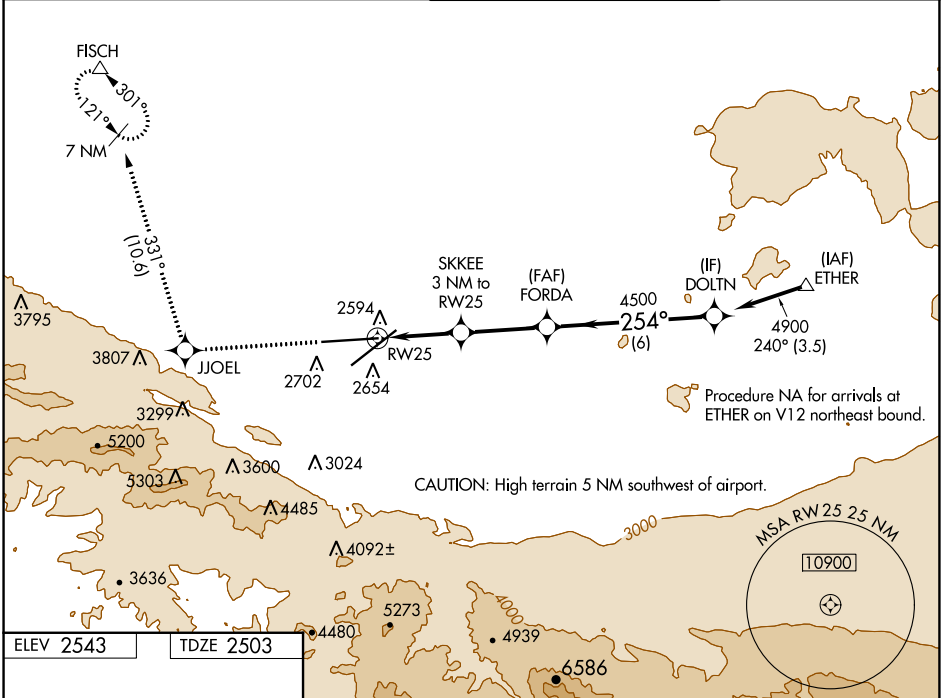
RNAV (GPS) RWY 25

PALMDALE USAF PLANT 42 (PMD)

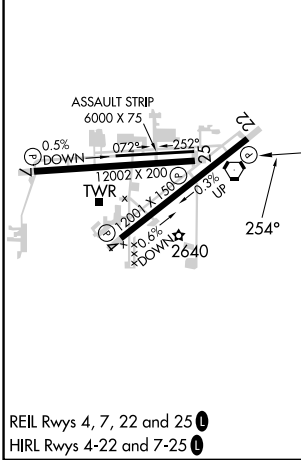
⚠ For uncompensated Baro-VNAV systems, LNAV/VNAV NA below -6°C (22°F) or above 50°C (123°F). Circling NA for Cats C and D south of Rwy 4 and 25.
DME/DME RNP-0.3 NA.

MISSED APPROACH: Climb 6700 direct JJOEL and on track 331° direct FISCH and hold, continue climb-in-hold to 6700.

ATIS 118.275	JOSHUA APP CON 124.55 363.0	PALMDALE TOWER * 123.7 (CTAF) 317.6	GND CON 121.9 317.6
------------------------	---------------------------------------	---	-------------------------------



ELEV 2543	TDZE 2503
-----------	-----------



6700	JJOEL	↑	331°	FISCH	△	VGSi and RNAV glidepath not coincident (VGSi Angle 3.00/TCH 76).					
*LNAV only.					SKKEE	4500	DOLTN				
					3 NM to RW25	4500	4900				
					1 NM to RW25	3500	GP 3.00° TCH 63				
					1 NM	2 NM	3.1 NM	6 NM			
CATEGORY	A		B		C		D				
LPV DA	2703-3/4		200 (200-3/4)								
LNAV/VNAV DA	2806-1		303 (300-1)								
LNAV MDA	2880-1		377 (400-1)								
<input checked="" type="checkbox"/> CIRCLING	3020-1 477 (500-1)		3060-1 517 (600-1)		3140-1½ 597 (600-1½)		3740-3 1197 (1200-3)				

SW-3, 22 FEB 2024 to 21 MAR 2024

SW-3, 22 FEB 2024 to 21 MAR 2024