

VORTAC PMD 115.55 Chan 102(Y)	APP CRS 265°	Rwy ldg TDZE Apt Elev 12002 2503 2543
--------------------------------------------	------------------------	---------------------------------------------------------------------------

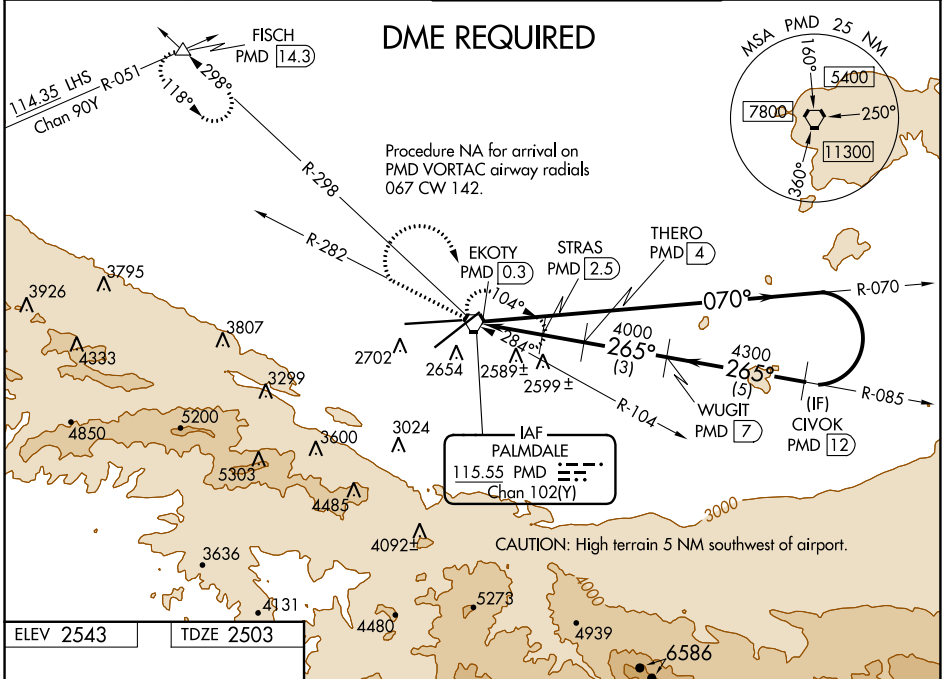
VOR or TACAN RWY 25

PALMDALE USAF PLANT 42 (PMD)

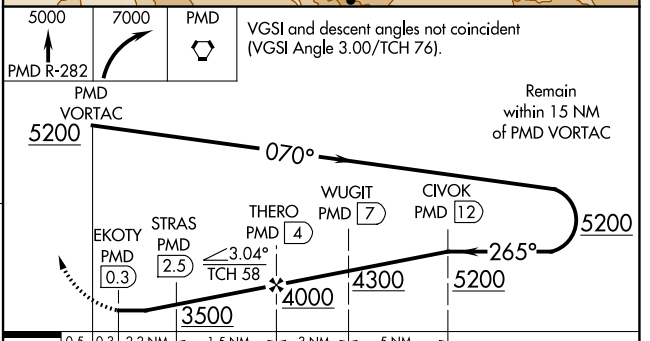
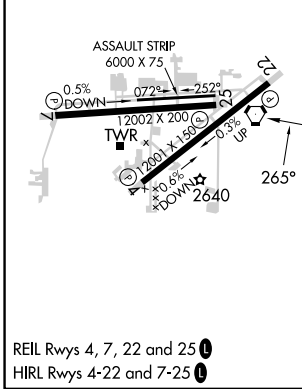
⚠ Circling NA for Cats C, D, and E south of Rws 4 and 25.
DME required.

MISSED APPROACH: Climb to 5000 on PMD VORTAC R-282 then climbing right turn to 7000 direct PMD VORTAC and hold (TACAN aircraft climbing right turn to 6700 on PMD VORTAC. R-298 to FISCH INT/ 14.3 DME and hold SE left turn 298° inbound, continue climb-in-hold to 6700).

ATIS 118.275	JOSHUA APP CON 124.55 363.0	PALMDALE TOWER ★ 123.7 (CTAF) 0 317.6	GND CON 121.9 317.6
------------------------	---------------------------------------	-------------------------------------------------	-------------------------------



ELEV 2543	TDZE 2503
-----------	-----------



CATEGORY	A	B	C	D	E
S-25	2840-1 337 (300-1)				
C CIRCLING	3020-1 477 (500-1)	3060-1 517 (600-1)	3140-1½ 597 (600-1½)	3740-3 1197 (1200-3)	3760-3 1217 (1300-3)

SW-3, 22 FEB 2024 to 21 MAR 2024

SW-3, 22 FEB 2024 to 21 MAR 2024