

LOC/DME I-DCI 110.3 Chan 40	APP CRS 350°	Rwy Idg 8900 TDZE 4665 Apt Elev 4697
--	------------------------	---

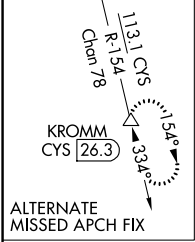
ILS or LOC RWY 35

GREELEY-WELD COUNTY (GXY)

⚠ VDP NA when using Northern Colorado Rgnl altimeter setting. When local altimeter not received, use Northern Colorado Rgnl altimeter setting and increase DA to 4950 feet and all visibilities ¼ SM; increase all MDAs 100 feet and visibility Cats C and D ½ SM.

MISSED APPROACH: Climb to 5300 then climbing right turn to 7000 on heading 120° and GLL VOR/DME R-136 to CEDUK INT/GLL 16 DME and hold.

AWOS-3PT 135.175	DENVER APP CON 134.85 251.125	CLNC DEL 126.65	UNICOM 122.8 (CTAF) ①
----------------------------	---	---------------------------	---------------------------------

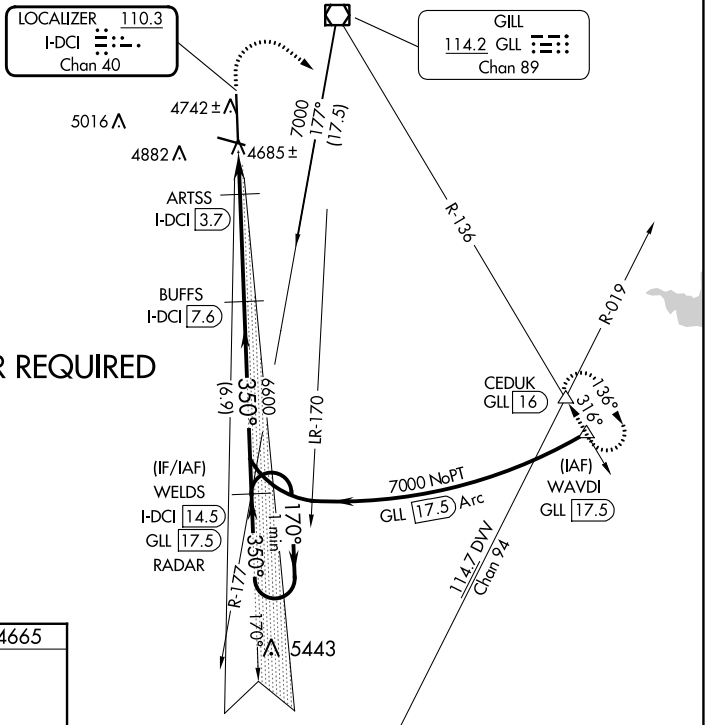
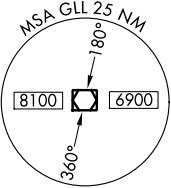


LOCALIZER 110.3
I-DCI [3.7]
Chan 40

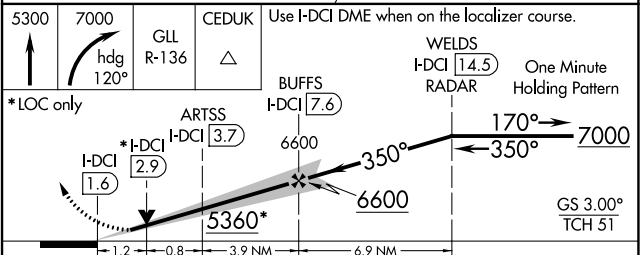
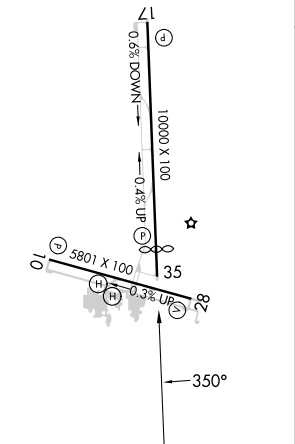
GILL 114.2 GLL
Chan 89

ALTERNATE MISSED APCH FIX

DME or RADAR REQUIRED



ELEV 4697	TDZE 4665
REIL Rwy 10, 17, 28 and 35 ①	
MIRL Rwy 10-28 and 17-35 ①	



CATEGORY	A	B	C	D
S-ILS 35	4865-¾ 200 (200-¾)			
S-LOC 35	5100-1	435 (500-1)	5100-1¼	435 (500-1¼)
☑ CIRCLING	5120-1 423 (500-1)	5200-1 503 (600-1)	5200-1½ 503 (600-1½)	5380-2¼ 683 (700-2¼)

SW-1, 22 FEB 2024 to 21 MAR 2024

SW-1, 22 FEB 2024 to 21 MAR 2024