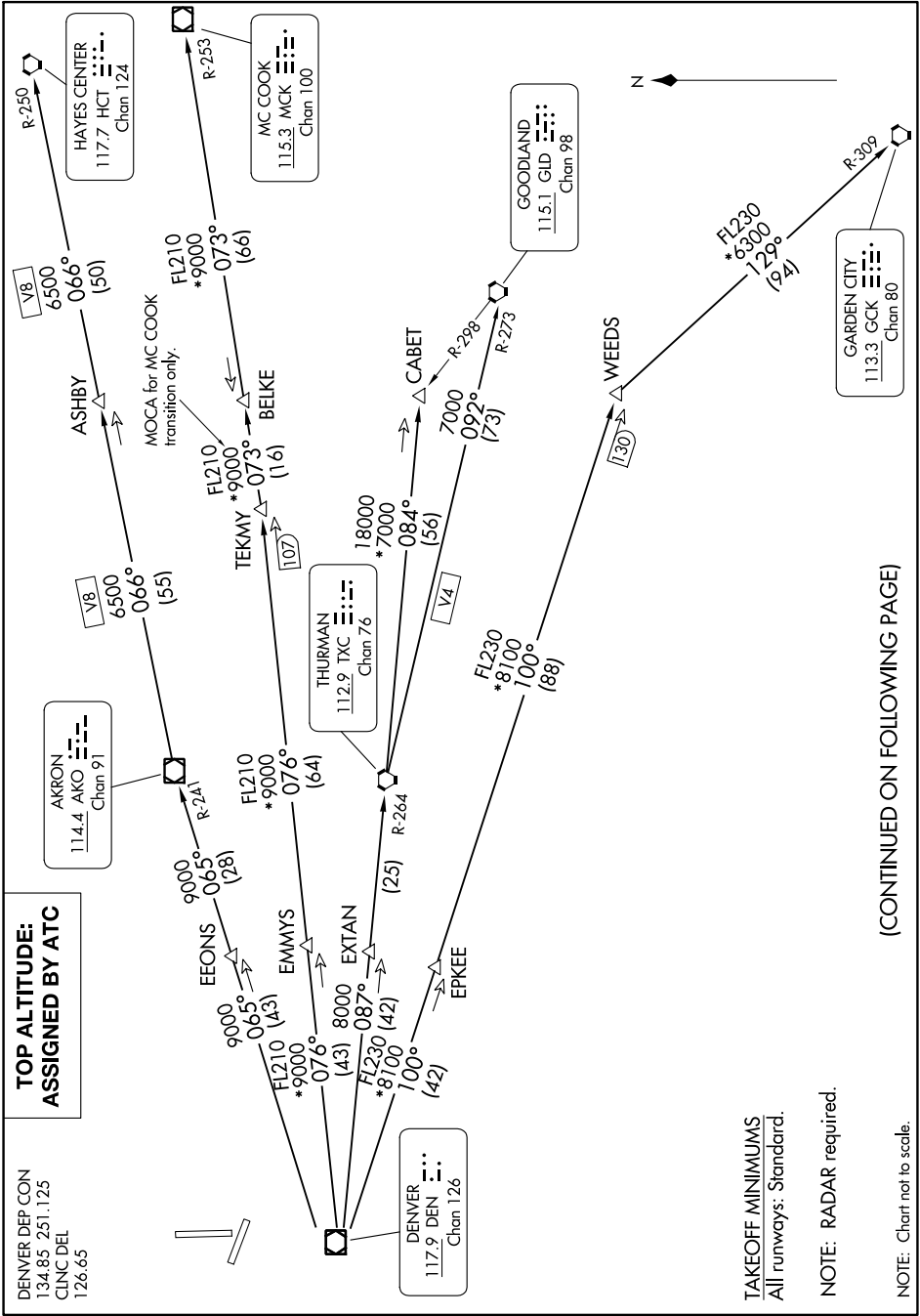


PLAINS ONE DEPARTURE

AL-325 (FAA)

GREELEY-WELD COUNTY (GXXY)
GREELEY, COLORADO

SW-1, 22 FEB 2024 to 21 MAR 2024



(CONTINUED ON FOLLOWING PAGE)

SW-1, 22 FEB 2024 to 21 MAR 2024

PLAINS ONE DEPARTURE

GREELEY, COLORADO
GREELEY-WELD COUNTY (GXXY)