

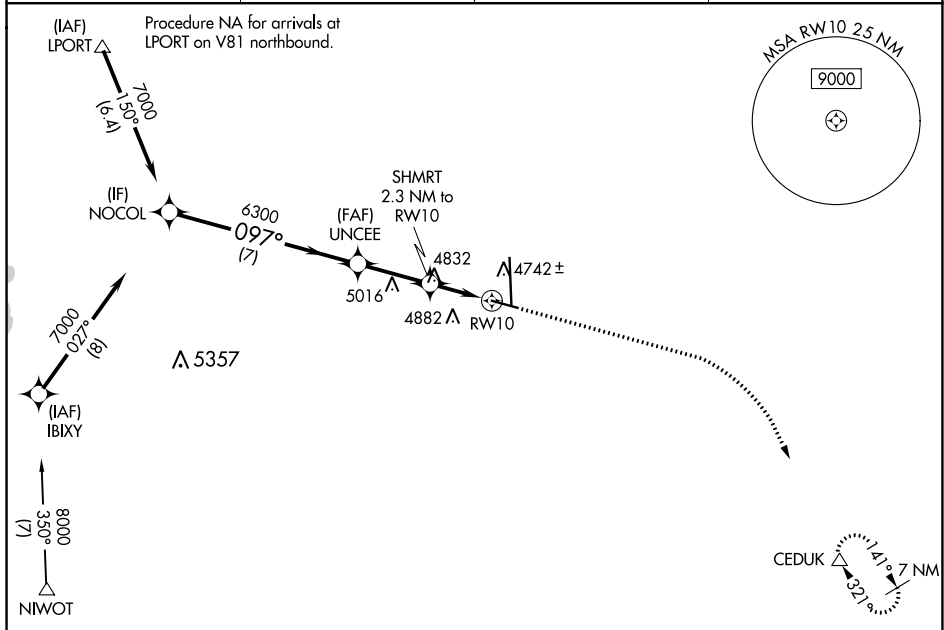
WAAS CH <b>62900</b> <b>W10A</b>	APP CRS <b>097°</b>	Rwy Idg TDZE Apt Elev	<b>5801</b> <b>4661</b> <b>4697</b>
--	------------------------	-----------------------------	---

# RNAV (GPS) RWY 10

GREELEY-WELD COUNTY (GXY)

RNP APCH. ▼ ▲ For uncompensated Baro-VNAV systems, LNAV/VNAV NA below -24°C or above 54°C.	MISSED APPROACH: Climb to 5400 then climbing right turn to 7000 direct CEDUK and hold.
--	--

AWOS-3PT <b>135.175</b>	DENVER APP CON <b>134.85 251.125</b>	CLNC DEL <b>126.65</b>	UNICOM <b>122.8 (CTAF) 0</b>
----------------------------	---	---------------------------	---------------------------------



SW-1, 22 FEB 2024 to 21 MAR 2024

SW-1, 22 FEB 2024 to 21 MAR 2024

VGSI and RNAV glidepath not coincident NOCOL (VGSI Angle 3.00/TCH 43).				
GP 3.00° TCH 50	*5440			
CATEGORY	A	B	C	D
LPV DA	4911-3/4		250 (300-3/4)	
LNAV/VNAV DA	4920-3/4		259 (300-3/4)	
LNAV MDA	5140-1	479 (500-1)	5140-1 3/8	479 (500-1 3/8)
CIRCLING	5140-1 443 (500-1)	5200-1 503 (600-1)	5200-1 1/2 503 (600-1 1/2)	5380-2 1/4 683 (700-2 1/4)

