

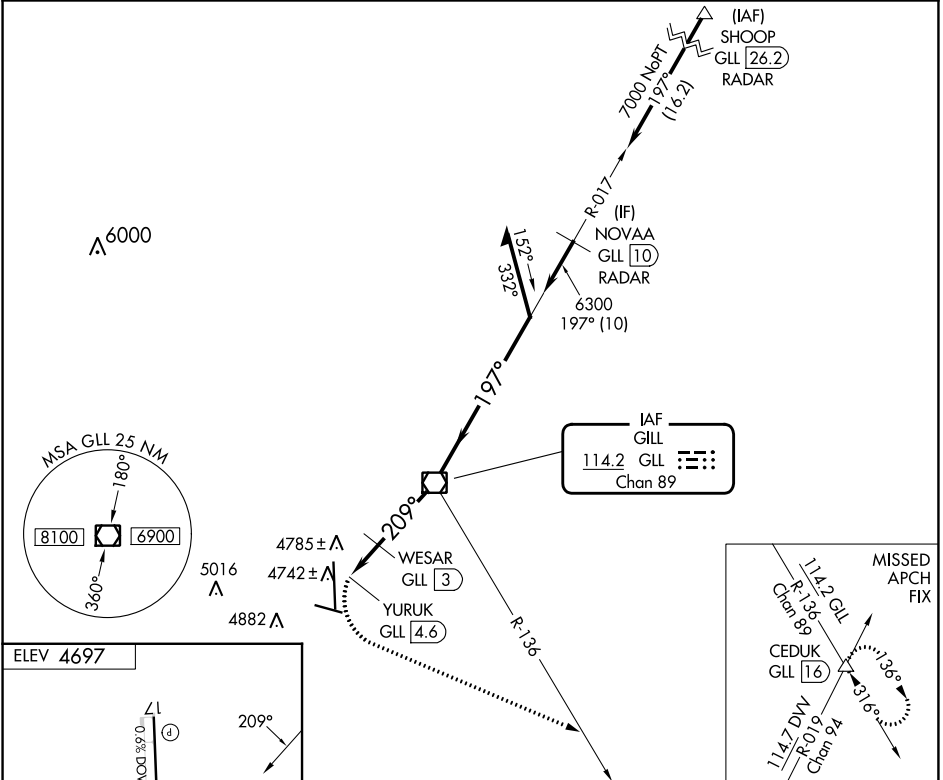
VOR/DME GLL 114.2 Chan 89	APP CRS 209°	Rwy Idg TDZE Apt Elev 4697	N/A N/A 4697
---	------------------------	--	---

VOR-A
GREELEY-WELD COUNTY (GXY)

⚠ When local altimeter setting not received, use Northern Colorado Rgnl altimeter setting and increase all MDA 100 feet and visibility Cat C/D and WESAR fix minimums Cat C/D visibility ¼ SM. DME required.

MISSED APPROACH: Climbing left turn to 7000 on heading 100° and GLL VOR/DME R-136 to CEDUK INT/GLL 16 DME and hold.

AWOS-3PT 135.175	DENVER APP CON 134.85 251.125	CLNC DEL 126.65	UNICOM 122.8 (CTAF)
----------------------------	---	---------------------------	-------------------------------



SW-1, 22 FEB 2024 to 21 MAR 2024

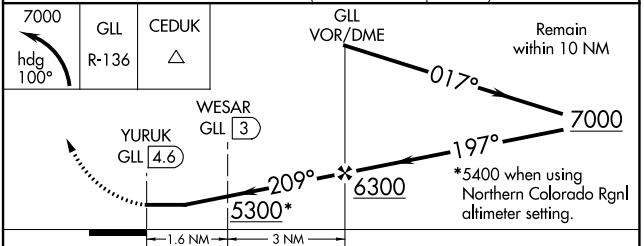
SW-1, 22 FEB 2024 to 21 MAR 2024

ELEV 4697

REIL Rwys 10, 28, 17 and 35
MIRL Rwys 10-28 and 17-35

FAF to MAP 4.6 NM

Knots	60	90	120	150	180
Min:Sec	4:36	3:04	2:18	1:50	1:32



CATEGORY	A	B	C	D
C CIRCLING	5300-1	603 (700-1)	5300-1¾ 603 (700-1¾)	5380-2¼ 683 (700-2¼)
WESAR FIX MINIMUMS (DME REQUIRED)				
C CIRCLING	5120-1 423 (500-1)	5200-1 503 (600-1)	5200-1½ 503 (600-1½)	5380-2¼ 683 (700-2¼)