

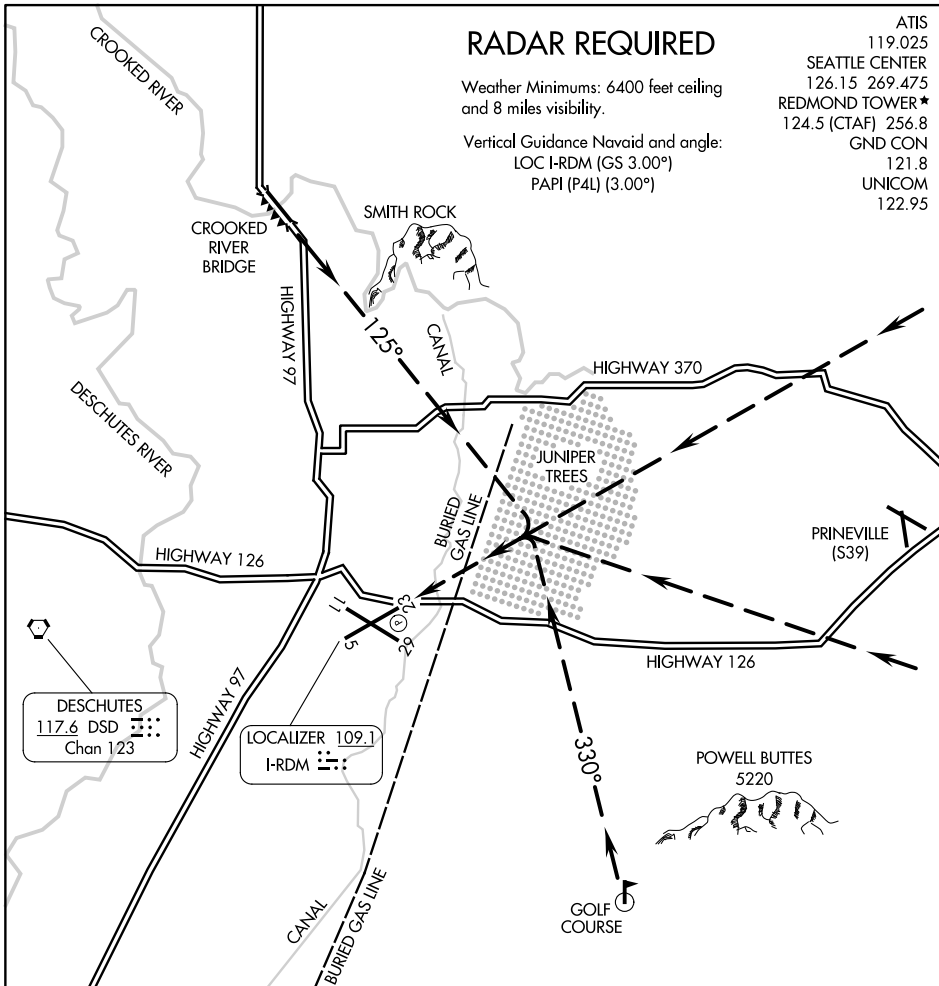
JUNIPER VISUAL RWY 23

RADAR REQUIRED

Weather Minimums: 6400 feet ceiling and 8 miles visibility.

Vertical Guidance Navaid and angle:
LOC I-RDM (GS 3.00°)
PAPI (P4L) (3.00°)

ATIS 119.025
 SEATTLE CENTER 126.15 269.475
 REDMOND TOWER * 124.5 (CTAF) 256.8
 GND CON 121.8
 UNICOM 122.95



NW-1, 22 FEB 2024 to 21 MAR 2024

NW-1, 22 FEB 2024 to 21 MAR 2024

1 NM	2	3	4	5	6	7	8	9	10	11	12	13	14	15	16	17	18
------	---	---	---	---	---	---	---	---	----	----	----	----	----	----	----	----	----

JUNIPER VISUAL APPROACH RWY 23
PROCEDURE NOT AUTHORIZED AT NIGHT

JUNIPER VISUAL RWY 23