

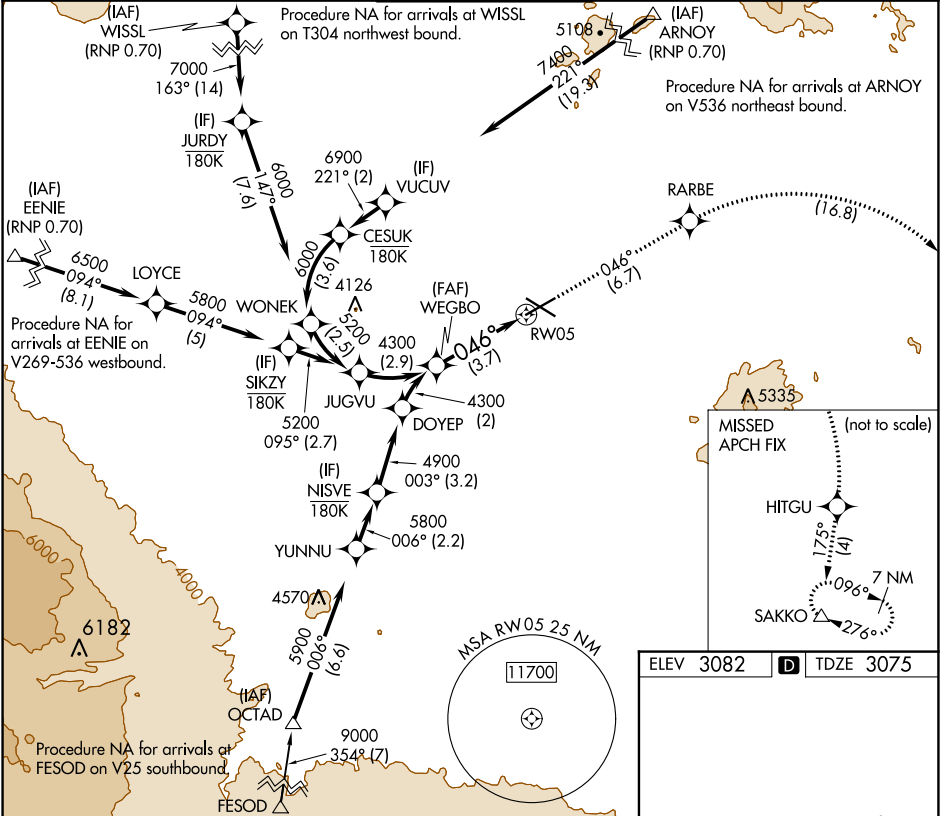
APP CRS	Rwy Idg	7038
046°	TDZE	3075
	Apt Elev	3082

RNAV (RNP) Z RWY 5

ROBERTS FLD (RDM)

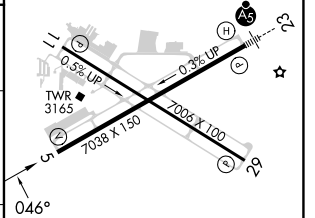
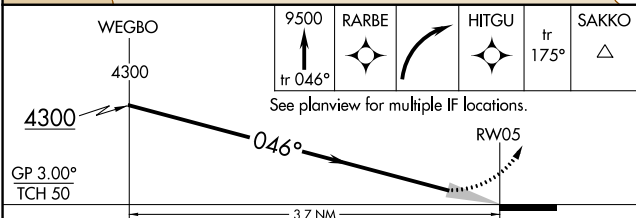
RNP AR APCH. RF required.	MISSED APPROACH: Climb to 9500 on track 046° to RARBE right turn to HITGU and on track 175° to SAKKO and hold, continue climb-in-hold to 9500.
For uncompensated Baro-VNAV systems, procedure NA below -17°C or above 53°C.	

ATIS 119.025	SEATTLE CENTER 126.15 269.475	REDMOND TOWER* 124.5 (CTAF) 0 256.8	GND CON 121.8	UNICOM 122.95
------------------------	---	---	-------------------------	-------------------------



NW-1, 22 FEB 2024 to 21 MAR 2024

NW-1, 22 FEB 2024 to 21 MAR 2024



CATEGORY	A	B	C	D
RNP 0.10 DA		3351-7/8	276 (300-7/8)	
RNP 0.30 DA		3574-1 1/8	499 (500-1 1/8)	

ELEV 3082	TDZE 3075
REIL Rwy 5, 11, and 29	
HIRL Rwy 5-23	
MIRL Rwy 11-29	

AUTHORIZATION REQUIRED