

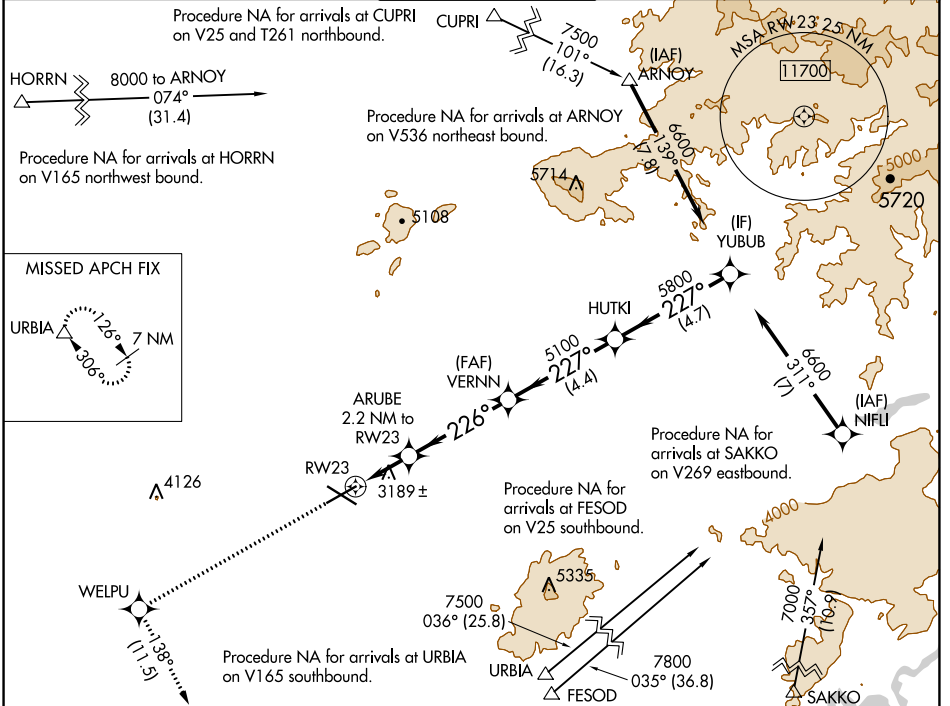
WAAS CH 82514 W23A	APP CRS 226°	Rwy Idg TDZE Apt Elev	7031 3067 3080
--	------------------------	-----------------------------	---

RNAV (GPS) Y RWY 23

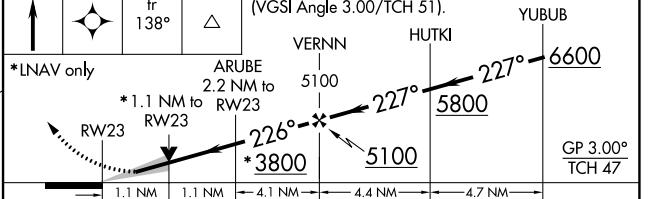
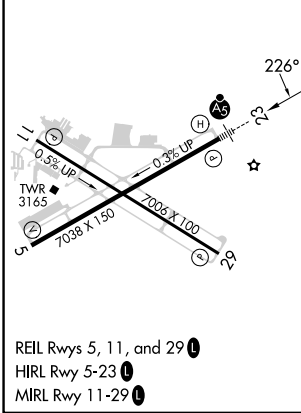
ROBERTS FLD (RDM)

<p>For uncompensated Baro-VNAV systems, LNAV/VNAV NA below -20°C (-4°F) or above 53°C (128°F). DME/DME RNP-0.3 NA. For inop ALS, increase LNAV/VNAV all Cats visibility to ¾ SM and LNAV Cat C/D visibility to 1 SM.</p>	<p>MALS/R </p>	<p>MISSED APPROACH: Climb to 8500 direct WELPU and on track 138° to URBIA and hold, continue climb-in-hold to 8500.</p>
---	---------------------	---

ATIS 119.025	SEATTLE CENTER 126.15 269.475	REDMOND TOWER★ 124.5 (CTAF) 0 256.8	GND CON 121.8	UNICOM 122.95
------------------------	---	---	-------------------------	-------------------------



ELEV 3080	D	TDZE 3067	8500	WELPU	tr 138°	URBIA	VGSI and RNAV glidepath not coincident (VGSI Angle 3.00/TCH 51).
-----------	----------	-----------	------	-------	---------	-------	--



CATEGORY	A	B	C	D
LPV DA		3267-½	200 (200-½)	
LNAV/VNAV DA		3383-5/8	316 (400-5/8)	
LNAV MDA	3440-½	373 (400-½)	3440-¾	373 (400-¾)
C CIRCLING	3540-1 460 (500-1)	3560-1 480 (500-1)	3640-1½ 560 (600-1½)	3760-2¼ 680 (700-2¼)

NW-1, 22 FEB 2024 to 21 MAR 2024

NW-1, 22 FEB 2024 to 21 MAR 2024