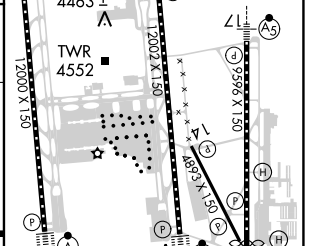
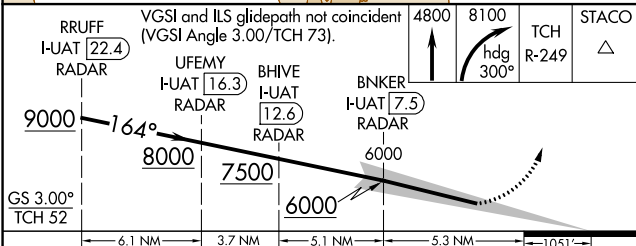
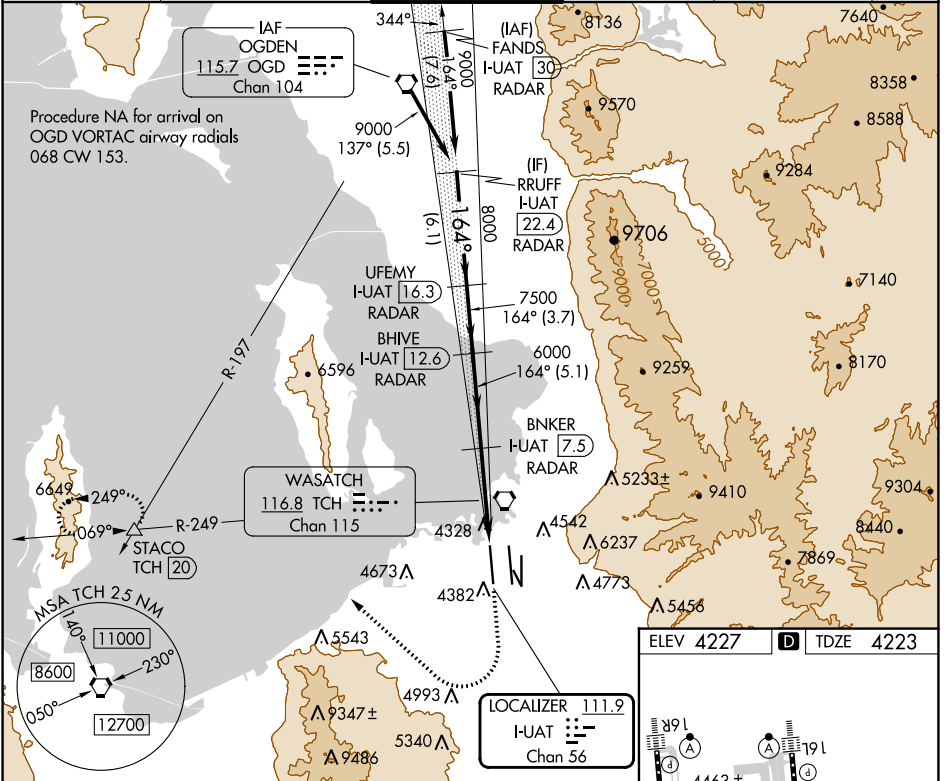


LOC/DME I-UAT <b>111.9</b> Chan 56	APP CRS <b>164°</b>	Rwy ldg <b>12000</b>
	TDZE <b>4223</b>	
	Apt Elev <b>4227</b>	

# ILS RWY 16R (SA CAT I)

SALT LAKE CITY INTL (SLC)

DME or RADAR required.		ALSIF-2	MISSED APPROACH: Climb to 4800 then climbing right turn to 8100 on heading 300° and on TCH VORTAC R-249 to STACO INT/TCH 20 DME and hold.		
▼ Simultaneous approach authorized. Requires specific OPSPEC, MSPEC, or LOA approval and use of HUD to DH.		(A)			
D-ATIS <b>124.75 125.625</b>	SALT LAKE CITY APP CON <b>125.7 284.6</b>	SALT LAKE CITY TOWER <b>132.65 336.4</b>	GND CON <b>123.775 348.6</b>	CLNC DEL <b>127.3 379.975</b>	CPDLC



RRUFF I-UAT 22.4 RADAR	UFEYU I-UAT 16.3 RADAR	BHIVE I-UAT 12.6 RADAR	BNKER I-UAT 7.5 RADAR	STACO TCH 20
9000	8000	7500	6000	4800
6.1 NM	3.7 NM	5.1 NM	5.3 NM	1051'
GS 3.00° TCH 52	VGSI and ILS glidepath not coincident (VGSI Angle 3.00/TCH 73).			
RRUFF I-UAT 22.4 RADAR	UFEYU I-UAT 16.3 RADAR	BHIVE I-UAT 12.6 RADAR	BNKER I-UAT 7.5 RADAR	STACO TCH 20
9000	8000	7500	6000	4800
6.1 NM	3.7 NM	5.1 NM	5.3 NM	1051'
GS 3.00° TCH 52	VGSI and ILS glidepath not coincident (VGSI Angle 3.00/TCH 73).			
RRUFF I-UAT 22.4 RADAR	UFEYU I-UAT 16.3 RADAR	BHIVE I-UAT 12.6 RADAR	BNKER I-UAT 7.5 RADAR	STACO TCH 20
9000	8000	7500	6000	4800
6.1 NM	3.7 NM	5.1 NM	5.3 NM	1051'
GS 3.00° TCH 52	VGSI and ILS glidepath not coincident (VGSI Angle 3.00/TCH 73).			

ELEV 4227	D	TDZE 4223
HIRL all Rwws		
TDZ/CL Rwws 16L, 16R, 17, 34L, 34R, and 35		

SW-4, 22 FEB 2024 to 21 MAR 2024

SW-4, 22 FEB 2024 to 21 MAR 2024