

LOC/DME I-UUJH <b>111.9</b> Chan 56	APP CRS <b>344°</b>	Rwy Idg TDZE <b>12000</b> <b>4229</b>	Apt Elev <b>4231</b>
---	------------------------	---	-------------------------

# ILS RWY 34L (SA CAT I)

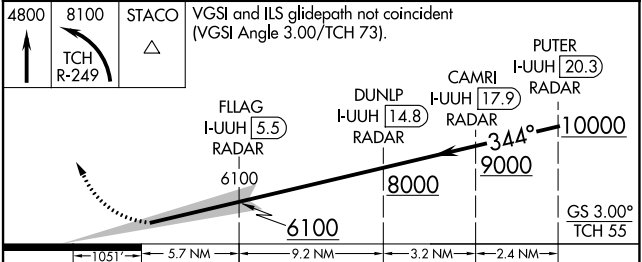
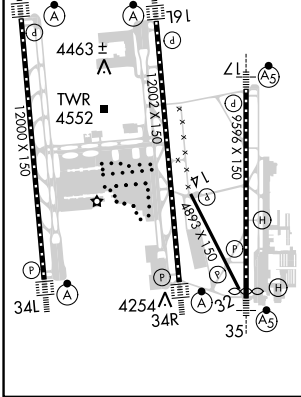
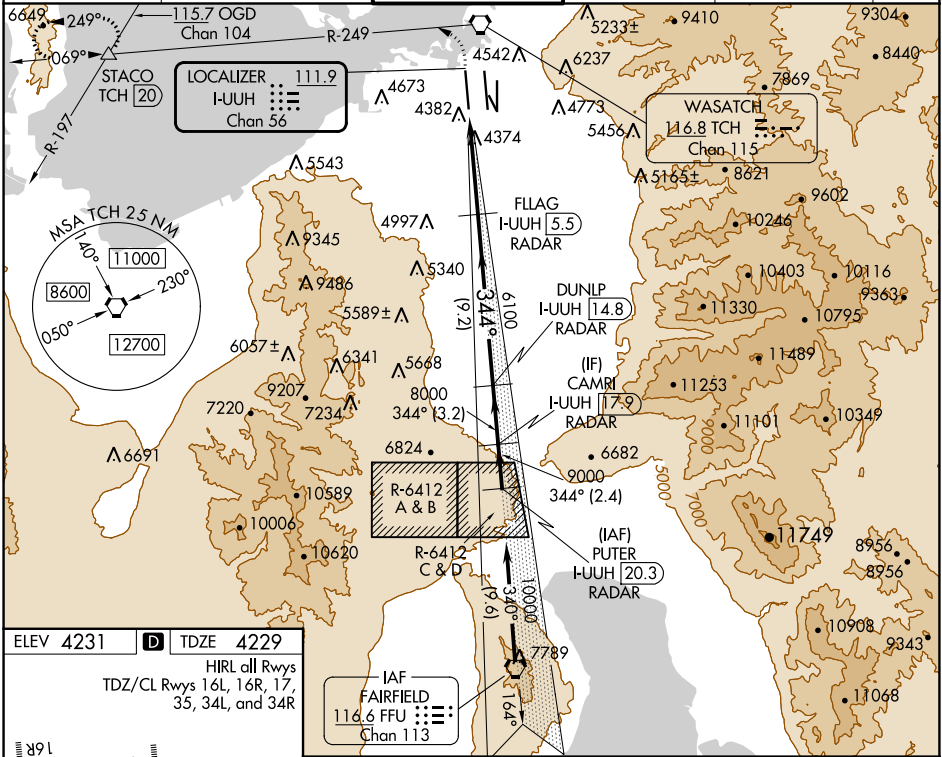
SALT LAKE CITY INTL (SLC)

RADAR required for arrivals at PUTER. DME or RADAR required.

ALSF-2

MISSED APPROACH: Climb to 4800 then climbing left turn to 8100 on TCH VORTAC R-249 to STACO INT/TCH 20 DME and hold.

D-ATIS <b>124.75 125.625</b>	SALT LAKE CITY APP CON <b>125.7 284.6</b>	SALT LAKE CITY TOWER <b>132.65 336.4</b>	GND CON <b>123.775 348.6</b>	CLNC DEL <b>127.3 379.975</b>	CPDLC
---------------------------------	--	---	---------------------------------	----------------------------------	-------



CATEGORY	A	B	C	D
S-ILS 34L	RA 158/14 150 DA 4379			

**SA CATEGORY I ILS - SPECIAL AIRCREW & AIRCRAFT CERTIFICATION REQUIRED**

SW-4, 22 FEB 2024 to 21 MAR 2024

SW-4, 22 FEB 2024 to 21 MAR 2024