


LOC/DME I-BNT 111.5 Chan 52	APP CRS 169°	Rwy Idg TDZE Apt Elev	9596 4219 4227
--	------------------------	-----------------------------	---

ILS or LOC RWY 17

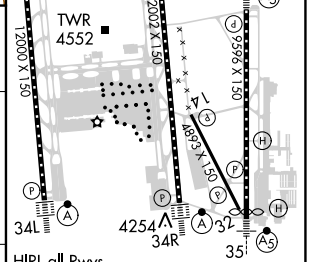
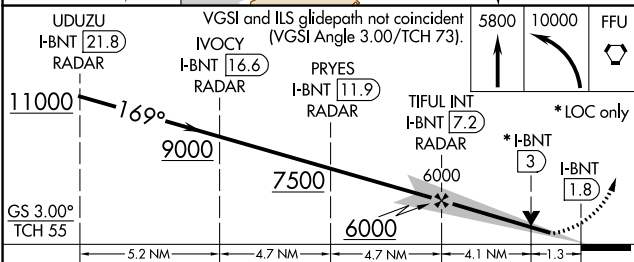
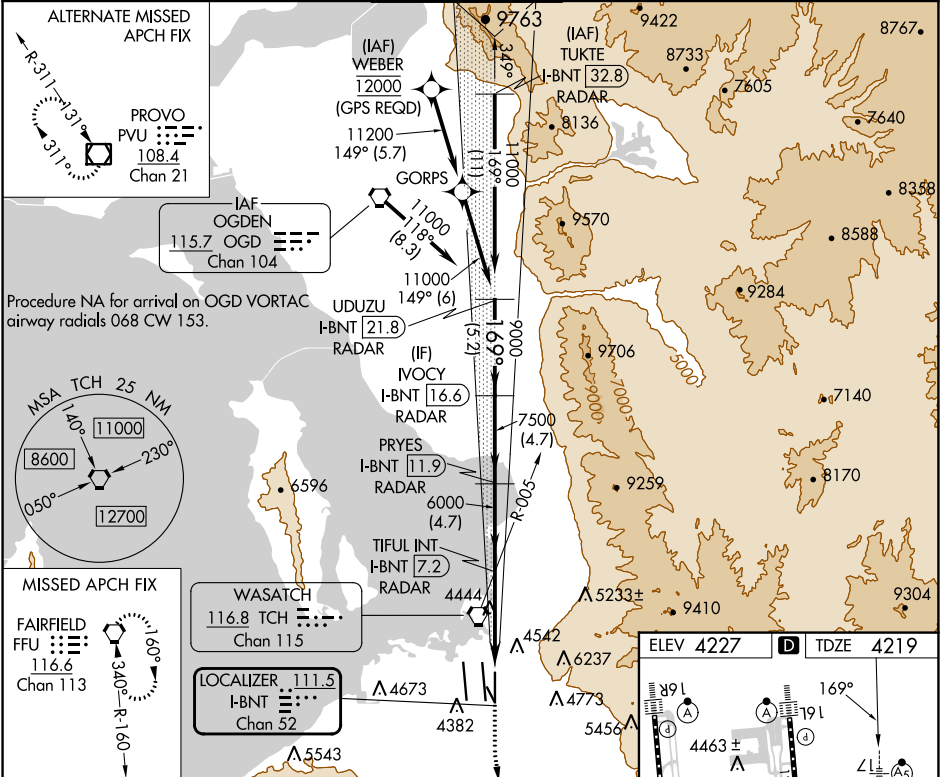
SALT LAKE CITY INTL (SLC)

▼ DME or RADAR required. Simultaneous approach authorized. For inop ALS, increase S-ILS 17 Cat E visibility to RVR 4000, increase S-LOC 17 Cat C/D/E visibility to 1 $\frac{1}{2}$ SM.

MALSR 

MISSED APPROACH: Climb to 5800 then climbing left turn to 10000 direct FFU VORTAC and hold.

D-ATIS 124.75 125.625	SALT LAKE CITY APP CON 125.7 284.6	SALT LAKE CITY TOWER 118.3 257.8	GND CON 121.9 348.6	CLNC DEL 127.3 379.975	CPDLC
---------------------------------	--	--	-------------------------------	----------------------------------	-------



CATEGORY	A	B	C	D	E
S-ILS 17	4419/18 200 (200- $\frac{1}{2}$)				
S-LOC 17	4700/24	481 (500- $\frac{1}{2}$)	4700/50 481 (500-1)		

FAF to MAP 5.4 NM					
Knots	60	90	120	150	180
Min:Sec	5:24	3:36	2:42	2:10	1:48

SW-4, 22 FEB 2024 to 21 MAR 2024

SW-4, 22 FEB 2024 to 21 MAR 2024