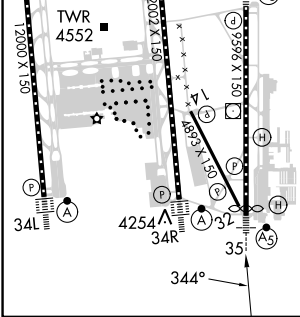
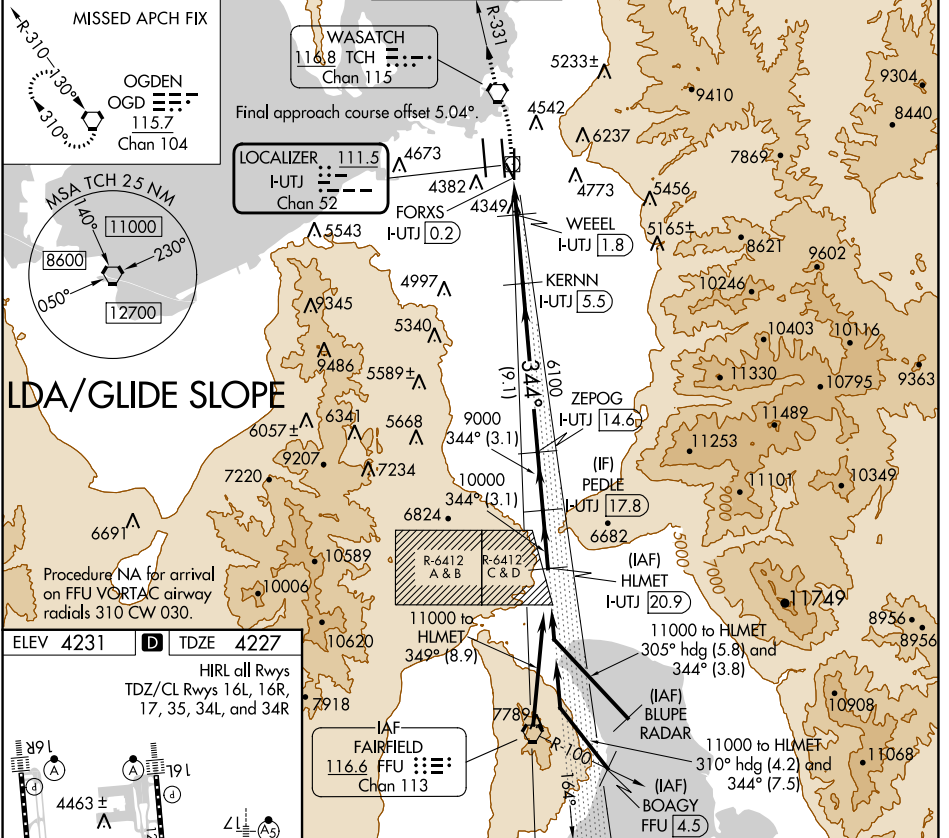


LOC/DME I-UTJ 111.5 Chan 52	APP CRS 344°	Rwy Idg 9272 TDZE 4227 Apt Elev 4231
---	------------------------	--

LDA RWY 35

SALT LAKE CITY INTL (SLC)

DME required.		MALSR 	MISSED APPROACH: Climb to 4800 then climbing left turn to 9000 direct TCH VORTAC and on TCH VORTAC R-331 to OGD VORTAC and hold.		
D-ATIS 124.75 125.625	SALT LAKE CITY APP CON 125.7 284.6	SALT LAKE CITY TOWER 118.3 257.8	GND CON 121.9 348.6	CLNC DEL 127.3 379.975	CPDLC



4800	9000	TCH	TCH	OGD	VGS1 and LDA glidepath not coincident (VGS1 Angle 3.00/TCH 74).
		R-331			
					HLMET I-UTJ 20.9
					ZEPOG I-UTJ 14.6
					KERNN I-UTJ 5.5
					WEEL I-UTJ 1.8
					FORXS I-UTJ 0.2
					I-UTJ DME ANT.
					11000
					10000
					9000
					6100
					4900
					344°
					GS 3.00°
					TCH 55
					1.1 NM
					0.9 NM
					3.7 NM
					9.1 NM
					3.1 NM
					3.1 NM
CATEGORY	A	B	C	D	E
S-LDA/GS 35	4477/24 250 (300-1/2)				
S-LDA 35	4660/24	433 (500-1/2)	4660/40	433 (500-3/4)	

SW-4, 22 FEB 2024 to 21 MAR 2024

SW-4, 22 FEB 2024 to 21 MAR 2024