

WAAS CH <b>49230</b> <b>W34A</b>	APP CRS <b>344°</b>	Rwy Idg <b>12002</b> TDZE <b>4222</b> Apt Elev <b>4227</b>
--	------------------------	--

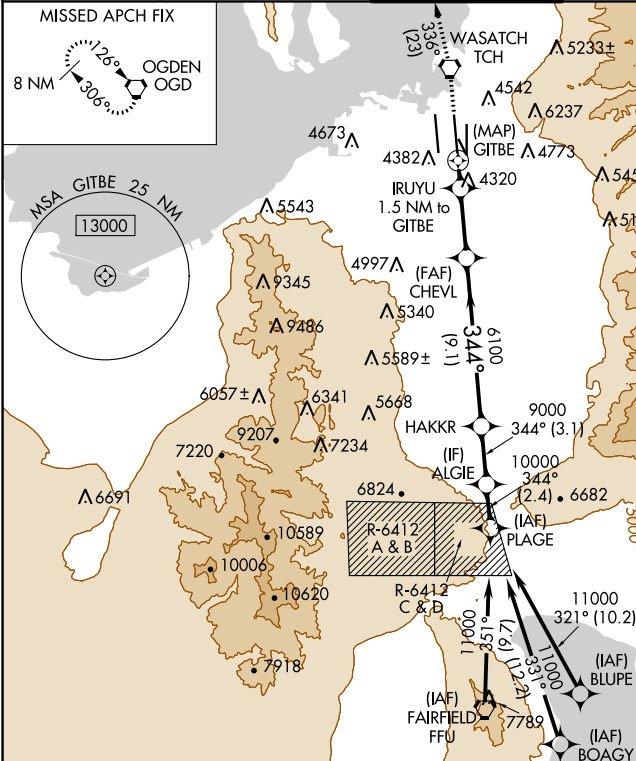
# RNAV (GPS) RWY 34R

SALT LAKE CITY INTL (SLC)

**V** Simultaneous approach authorized. DME/DME RNP-0.3 NA. Use of FD or AP providing RNAV track guidance required during simultaneous operations. LNAV procedure NA during simultaneous operations. For uncompensated Baro-VNAV systems, LNAV/VNAV NA below -17°C (1°F) or above 49°C (121°F). For inop ALS, increase LPV Cat E visibility to 3/4, LNAV/VNAV Cat E visibility to 1/4 and LNAV Cats C/D/E to 1/2 SM.

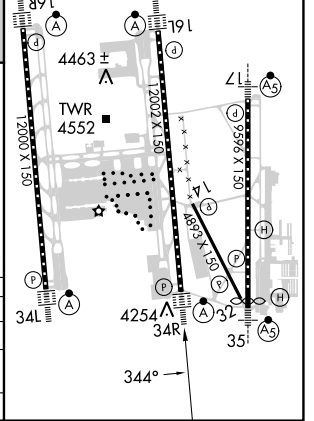
**ALS-F-2**  
**MISSED APPROACH:** Climb to 9000 direct TCH VORTAC and on track 336° to OGD VORTAC and hold.

D-ATIS <b>124.75 125.625</b>	SALT LAKE CITY APP CON <b>125.7 284.6</b>	SALT LAKE CITY TOWER <b>119.05 257.8</b>	GND CON <b>123.775 348.6</b>	CLNC DEL <b>127.3 379.975</b>	CPDLC
---------------------------------	--	---	---------------------------------	----------------------------------	-------

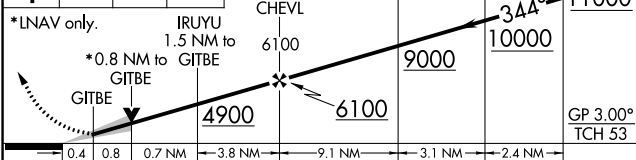


ELEV 4227	TDZE 4222
-----------	-----------

HIRL all Rwy's  
TDZ/CL Rwy's 16L, 16R, 17, 35, 34L, and 34R



9000 TCH	OGD	VGSI and RNAV glidepath not coincident (VGSI Angle 3.00/TCH 73).
tr 336°		ALGIE
		PLAGE



CATEGORY	A	B	C	D	E
LPV DA	4422/18		200 (200-1/2)		
LNAV/VNAV DA	4735/60		513 (600-1/4)		
LNAV MDA	4700/24	478 (500-1/2)	4700/50		478 (500-1)

SW-4, 22 FEB 2024 to 21 MAR 2024

SW-4, 22 FEB 2024 to 21 MAR 2024