

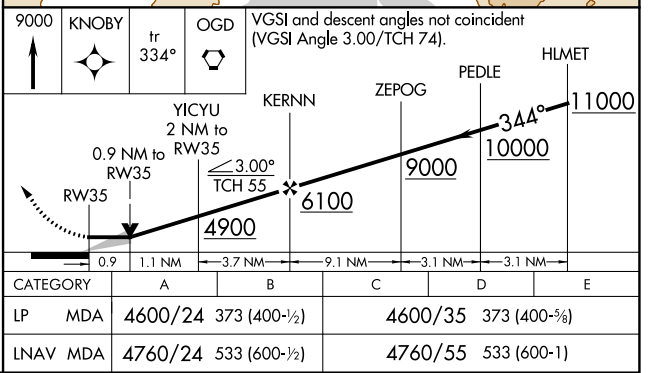
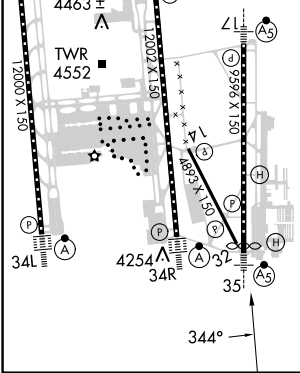
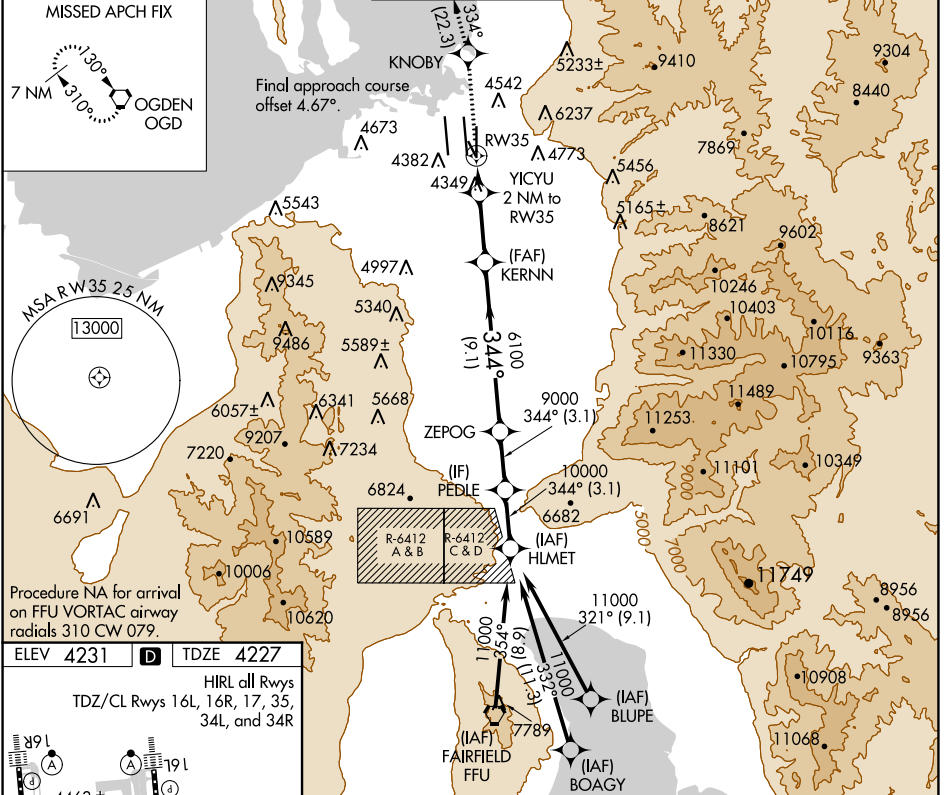
WAAS CH <b>42843</b> <b>W35A</b>	APP CRS <b>344°</b>	Rwy Idg TDZE Apt Elev	<b>9272</b> <b>4227</b> <b>4231</b>
--	------------------------	-----------------------------	---

# RNAV (GPS) RWY 35

SALT LAKE CITY INTL (SLC)

RNP APCH - GPS. ▼ For inop ALS, increase LP Cat C, D and E visibility to RVR 5500, increase LNAV Cat E visibility to 1½ SM.	MALS/R 	MISSED APPROACH: Climb to 9000 direct KNOBY and on track 334° to OGD VORTAC and hold.
--	------------	---

D-ATIS <b>124.75 125.625</b>	SALT LAKE CITY APP CON <b>125.7 284.6</b>	SALT LAKE CITY TOWER <b>118.3 257.8</b>	GND CON <b>121.9 348.6</b>	CLNC DEL <b>127.3 379.975</b>	CPDLC
---------------------------------	--	--	-------------------------------	----------------------------------	-------



SW-4, 22 FEB 2024 to 21 MAR 2024

SW-4, 22 FEB 2024 to 21 MAR 2024