

# RUGGD THREE DEPARTURE (RNAV)

AL-365 (FAA)

SALT LAKE CITY INTL (SLC)  
SALT LAKE CITY, UTAH

SW-4, 22 FEB 2024 to 21 MAR 2024

**TOP ALTITUDE:**  
**FL230**

RNAV 1 - DME/DME/IRU or GPS.  
RADAR required.

### TAKEOFF MINIMUMS

- Rwys 14, 32: NA-AIC.
- Rwy 16L: Standard with minimum climb of 470' per NM to 9900.
- Rwy 16R: Standard with minimum climb of 500' per NM to 9700.
- Rwy 17: Standard with minimum climb of 425' per NM to 9400.
- Rwy 34L: Standard with minimum climb of 250' per NM to 8500.
- Rwy 34R: Standard with minimum climb of 310' per NM to 11500.
- Rwy 35: Standard with minimum climb of 305' per NM to 11500.

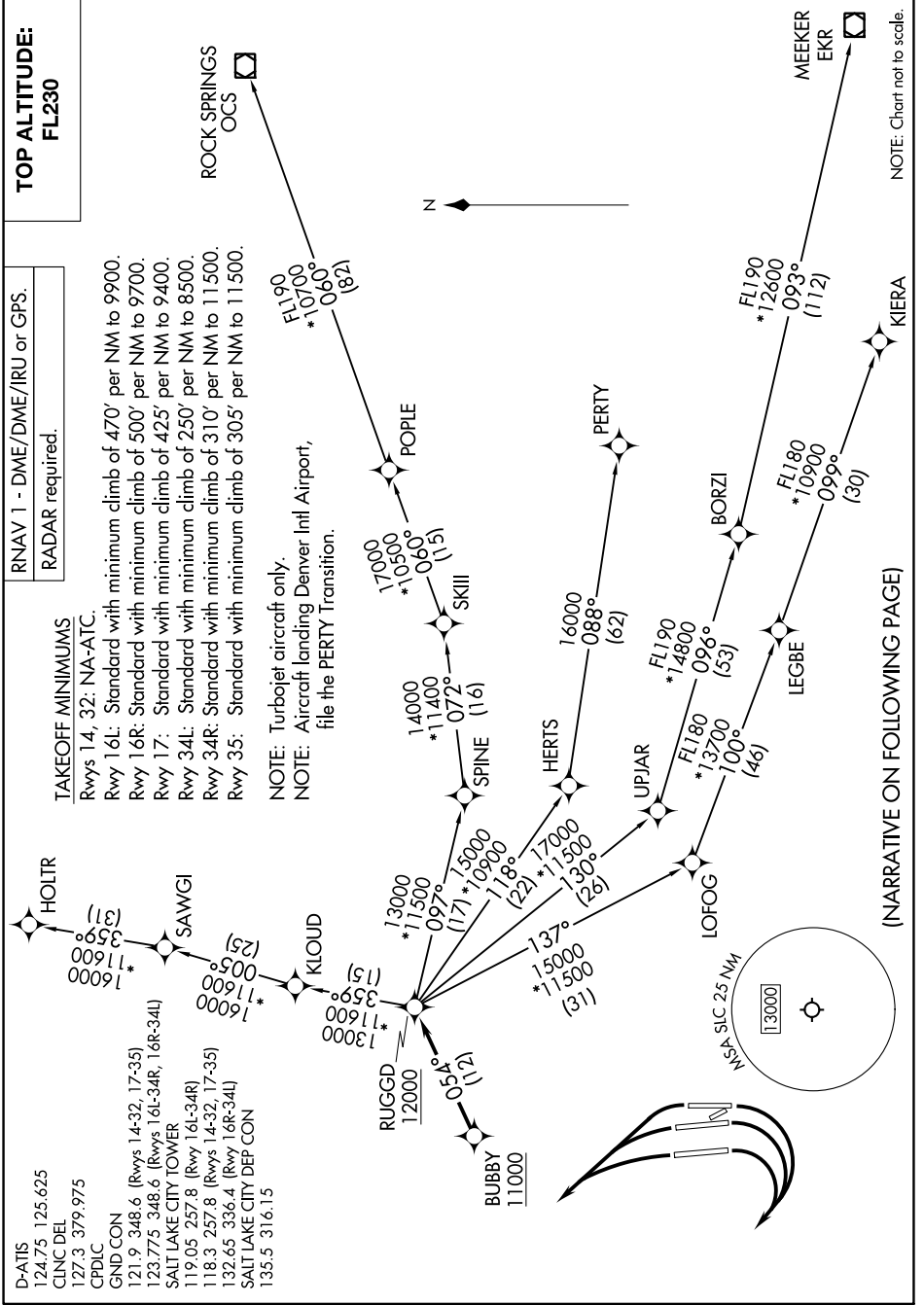
NOTE: Turbojet aircraft only.  
NOTE: Aircraft landing Denver Intl Airport, file the PERTY Transition.

- D-ATIS 124.75 125.625
- CLNC DEL 127.3 379.975
- CPDLC
- GND CON 121.9 348.6 (Rwys 14-32, 17-35)
- 123.775 348.6 (Rwys 16L-34R, 16R-34L)
- SALT LAKE CITY TOWER 119.05 257.8 (Rwy 16L-34R)
- 118.3 257.8 (Rwys 14-32, 17-35)
- 132.65 336.4 (Rwy 16R-34L)
- SALT LAKE CITY DEP CON 135.5 316.15

# RUGGD THREE DEPARTURE (RNAV)

(RUGGD3.RUGGD) 20APR23

SALT LAKE CITY, UTAH  
SALT LAKE CITY INTL (SLC)



(NARRATIVE ON FOLLOWING PAGE)

NOTE: Chart not to scale.

SW-4, 22 FEB 2024 to 21 MAR 2024