

# SEVYR THREE DEPARTURE

AL-365 (FAA)

SALT LAKE CITY INTL (SLC)  
SALT LAKE CITY, UTAH

SW-4, 22 FEB 2024 to 21 MAR 2024

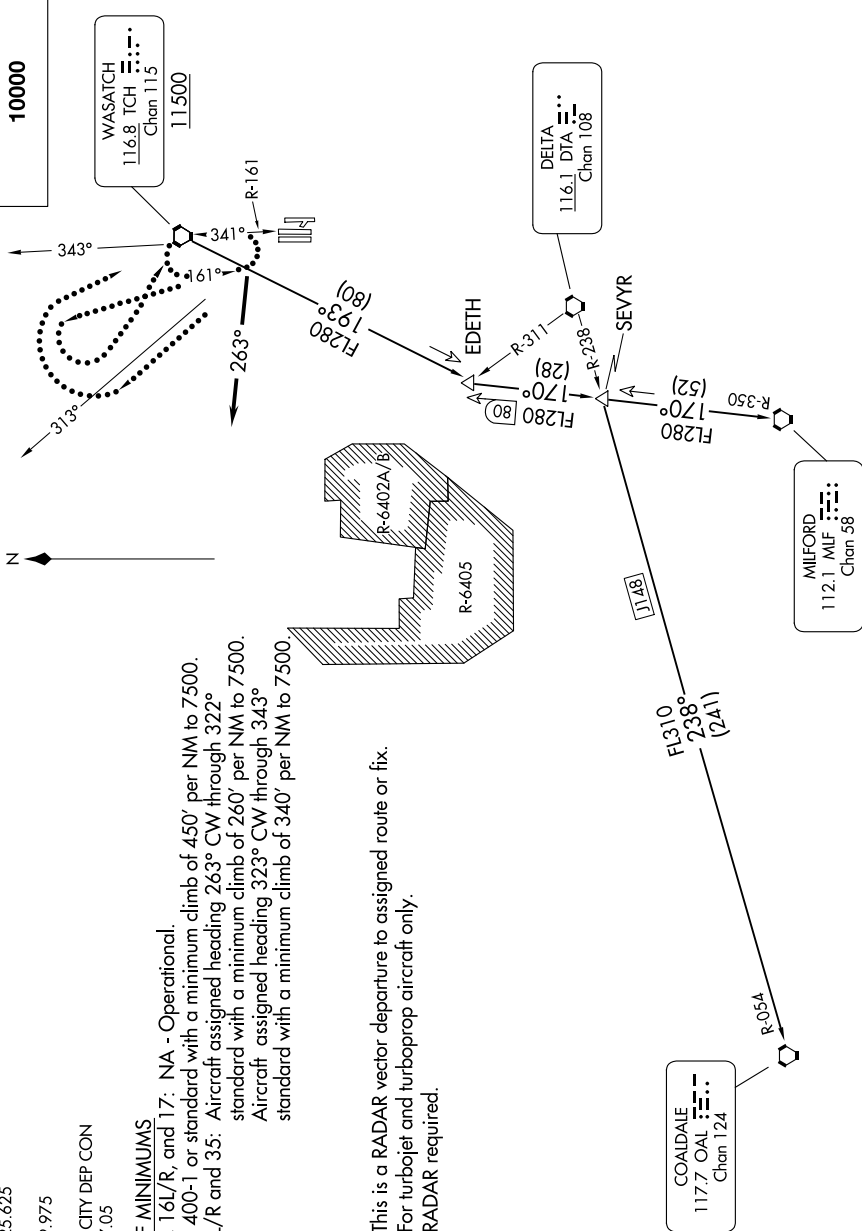
D-ATIS  
124.75 125.625  
CINCDEL  
127.3 379.975  
CPD/C  
SALT LAKE CITY DEP CON  
128.1 307.05

### TAKEOFF MINIMUMS

Rwys 14, 16L/R, and 17: NA - Operational.  
Rwy 32: 400-1 or standard with a minimum climb of 450' per NM to 7500.  
Rwys 34L/R and 35: Aircraft assigned heading 263° CW through 322° standard with a minimum climb of 260' per NM to 7500.  
Aircraft assigned heading 323° CW through 343° standard with a minimum climb of 340' per NM to 7500.

NOTE: This is a RADAR vector departure to assigned route or fix.  
NOTE: For turbojet and turboprop aircraft only.  
NOTE: RADAR required.

**TOP ALTITUDE:  
10000**



(CONTINUED ON FOLLOWING PAGE)

NOTE: Chart not to scale.

SW-4, 22 FEB 2024 to 21 MAR 2024