

SPANE SEVEN ARRIVAL

AL-365 (FAA)

SALT LAKE CITY INTL (SLC)
SALT LAKE CITY, UTAH

SW-4, 22 FEB 2024 to 21 MAR 2024

ARRIVAL ROUTE DESCRIPTION

HELPR TRANSITION (HELPR.SPANE7): From over HELPR via FFU R-100 SPANE, thence

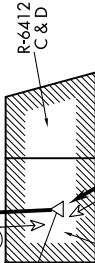
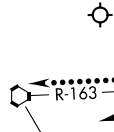
MEEKER TRANSITION (EKR.SPANE7): From over EKR VOR/DME via EKR R-258 to RACER, then via EKR R-258 and MTU R-078 to MTU VOR/DME, then via MTU R-255 to SPANE, thence

LANDING NORTH: . . . from SPANE on FFU R-100 to BOAGY, then to FFU VORTAC. Expect ILS RWY 34R approach.

LANDING SOUTH: . . . from SPANE on FFU R-100 to BOAGY, then to FFU VORTAC, then via FFU R-314 to DRYVE, then via OGD R-163 to CHHIP. After CHHIP, fly heading 345° for vectors to ILS or Visual RWY 16R approach.

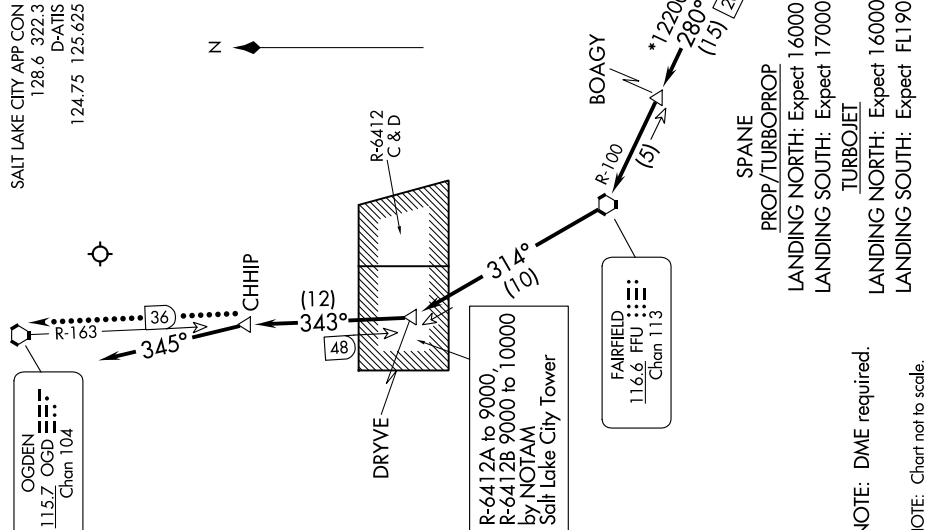
LOST COMMUNICATIONS: LANDING SOUTH: In the event of lost communications, at CHHIP INT proceed direct OGD VORTAC. Maintain 12000 until OGD VORTAC.

SALT LAKE CITY APP CON
128.6 322.3
D-ATIS
124.75 125.625



R-6412A to 9000,
R-6412B 9000 to 10000
by NOTAM
Salt Lake City Tower

FAIRFIELD
116.6 FFU
Chon 113



SPANE SEVEN ARRIVAL

(SPANE.SPANE7) 17AUG17

SALT LAKE CITY, UTAH
SALT LAKE CITY INTL (SLC)

SW-4, 22 FEB 2024 to 21 MAR 2024