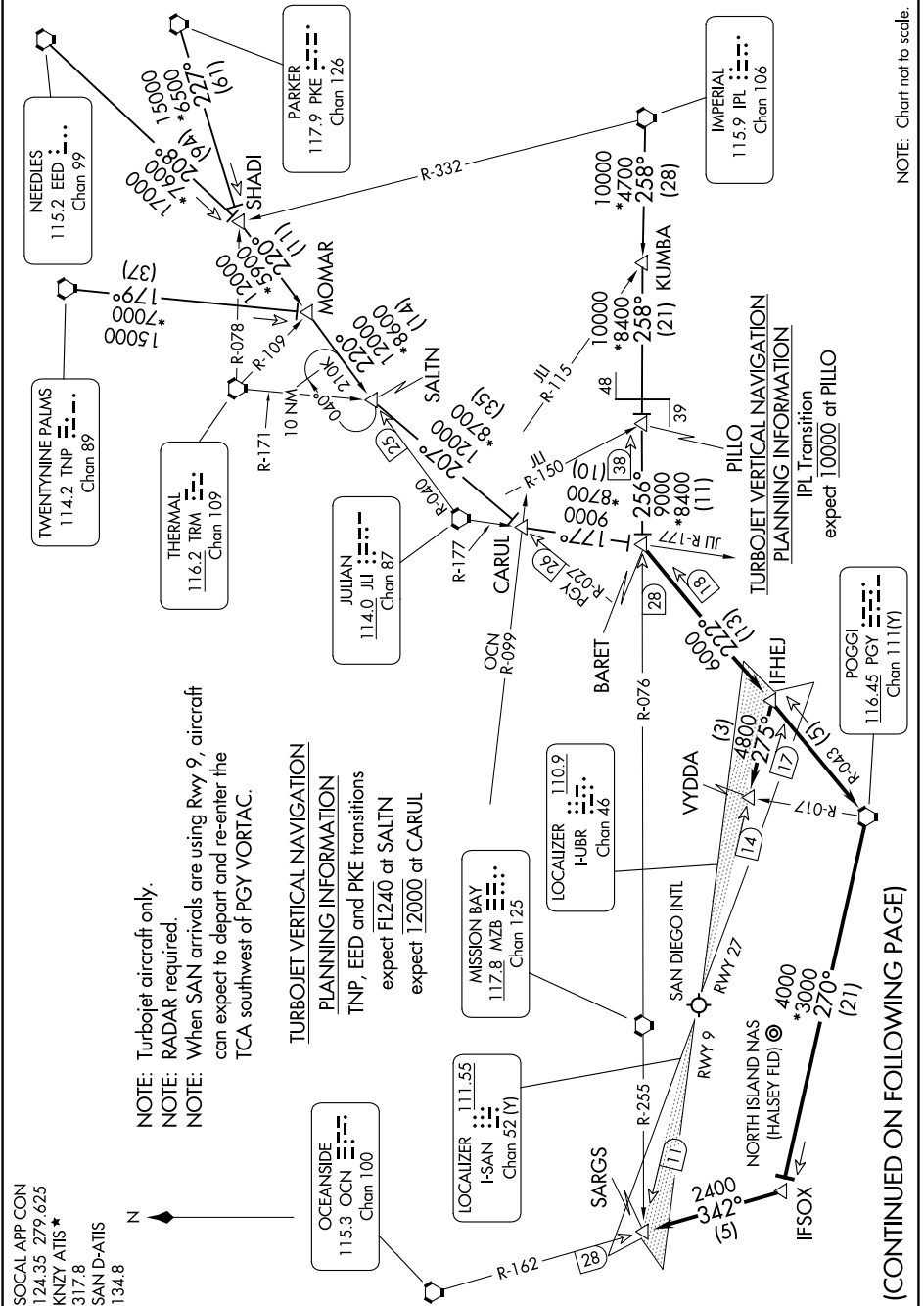


SW-3, 22 FEB 2024 to 21 MAR 2024



NOTE: Turboprop aircraft only.
 NOTE: RADAR required.
 NOTE: When SAN arrivals are using Rwy 9, aircraft can expect to depart and re-enter the TCA southwest of PGY VORTAC.

TURBOJET VERTICAL NAVIGATION
PLANNING INFORMATION
 TNP, EED and PKE transitions
 expect FL240 at SALTN
 expect 12000 at CARUL

PILLO VERTICAL NAVIGATION
PLANNING INFORMATION
 IPL Transition
 expect 10000 at PILLO

(CONTINUED ON FOLLOWING PAGE)

NOTE: Chart not to scale.

SW-3, 22 FEB 2024 to 21 MAR 2024