

ARRIVAL ROUTE DESCRIPTION

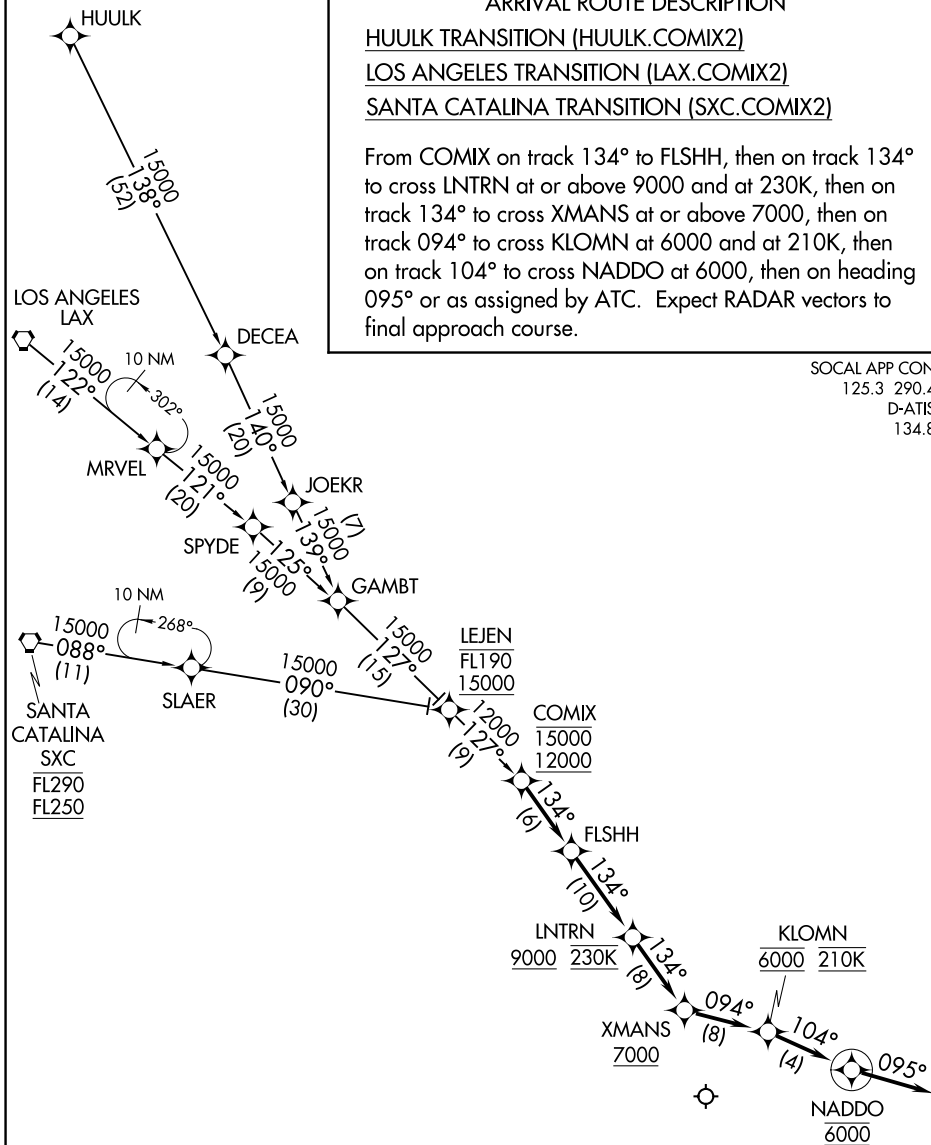
HUULK TRANSITION (HUULK.COMIX2)

LOS ANGELES TRANSITION (LAX.COMIX2)

SANTA CATALINA TRANSITION (SXC.COMIX2)

From COMIX on track 134° to FLSHH, then on track 134° to cross LNTRN at or above 9000 and at 230K, then on track 134° to cross XMANs at or above 7000, then on track 094° to cross KLOMN at 6000 and at 210K, then on track 104° to cross NADDO at 6000, then on heading 095° or as assigned by ATC. Expect RADAR vectors to final approach course.

SOCAL APP CON  
125.3 290.4  
D-ATIS  
134.8



SW-3, 22 FEB 2024 to 21 MAR 2024

SW-3, 22 FEB 2024 to 21 MAR 2024

- NOTE: RADAR required.
- NOTE: RNAV 1.
- NOTE: DME/DME/IRU or GPS required.
- NOTE: Turbojet and turboprop aircraft only.
- NOTE: Chart not to scale.