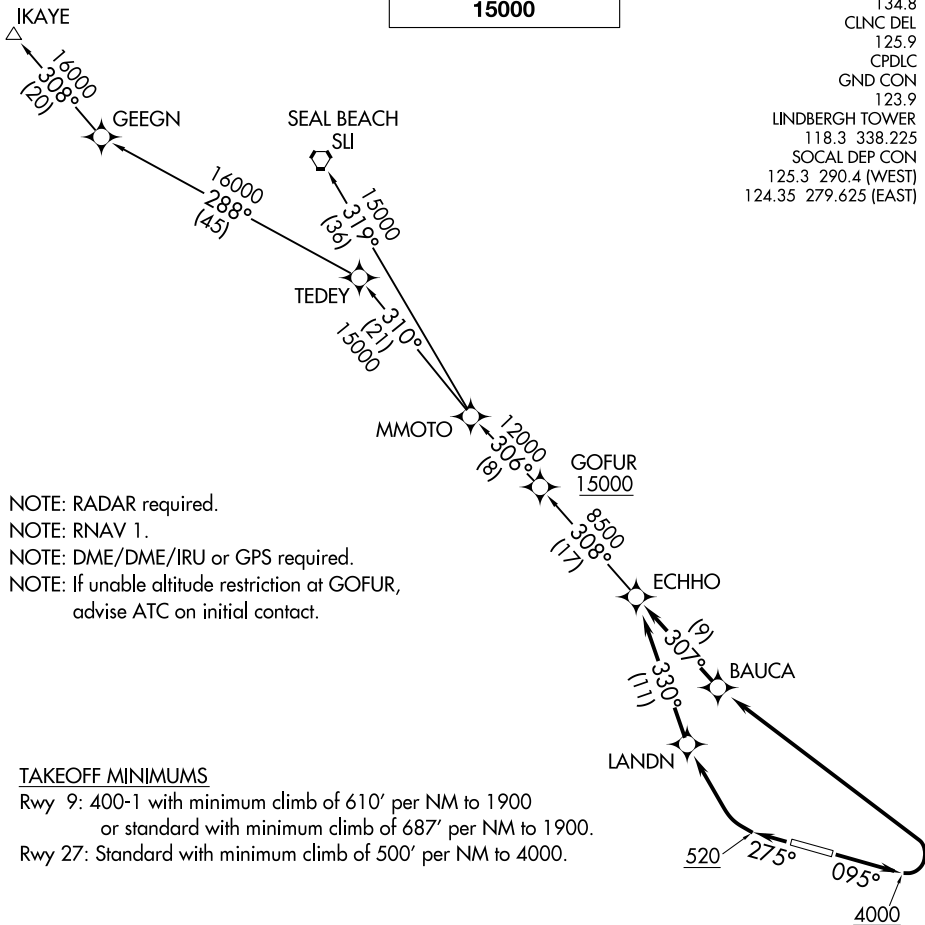


**TOP ALTITUDE:  
15000**

D-ATIS  
134.8  
CLNC DEL  
125.9  
CPDLC  
GND CON  
123.9  
LINDBERGH TOWER  
118.3 338.225  
SOCAL DEP CON  
125.3 290.4 (WEST)  
124.35 279.625 (EAST)



NOTE: RADAR required.  
NOTE: RNAV 1.  
NOTE: DME/DME/IRU or GPS required.  
NOTE: If unable altitude restriction at GOFUR,  
advise ATC on initial contact.

TAKEOFF MINIMUMS

Rwy 9: 400-1 with minimum climb of 610' per NM to 1900  
or standard with minimum climb of 687' per NM to 1900.  
Rwy 27: Standard with minimum climb of 500' per NM to 4000.

NOTE: Chart not to scale.

**DEPARTURE ROUTE DESCRIPTION**

TAKEOFF RUNWAY 9: Climb heading 095° to 4000, then left turn direct BAUCA, then on track 307° to ECHHO, thence. . . .

TAKEOFF RUNWAY 27: Climb heading 275° to 520, then right turn direct LANDN, then on track 330° to ECHHO, thence. . . .

. . . .on (transition), maintain 15000. Expect filed altitude 10 minutes after departure.

IKAYE TRANSITION (ECHHO2.IKAYE)

SEAL BEACH TRANSITION (ECHHO2.SLI)