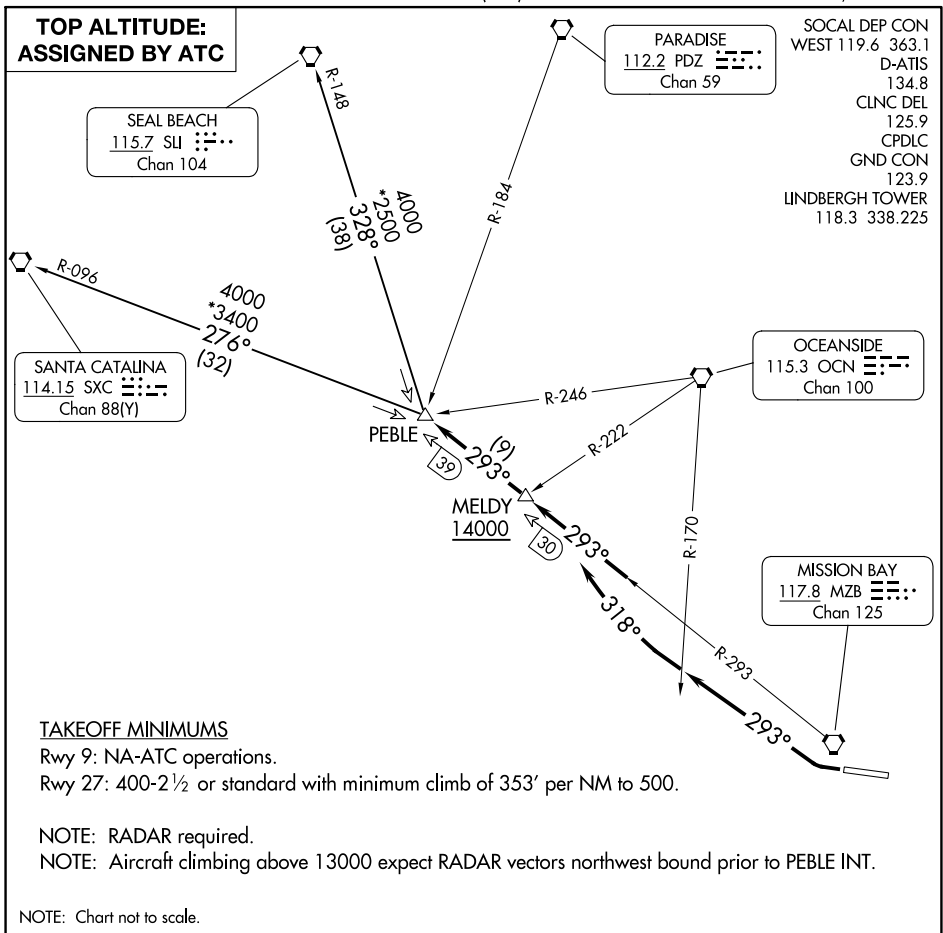


# PEBLE SIX DEPARTURE

AL-373 (FAA)

SAN DIEGO INTL (SAN)  
SAN DIEGO, CALIFORNIA



SW-3, 22 FEB 2024 to 21 MAR 2024

SW-3, 22 FEB 2024 to 21 MAR 2024

## DEPARTURE ROUTE DESCRIPTION

TAKEOFF RUNWAY 27: Climbing right turn heading 293° until crossing OCN VORTAC R-170, then turn right heading 318° to intercept MZB VORTAC R-293 to cross MELDY INT/MZB 30 DME at or above 14000 (or lower ATC assigned altitude) then on MZB R-293 to PEBLE INT/MZB 39 DME, thence. . . .

. . . . via (transition) or (assigned route). Maintain assigned altitude.

SANTA CATALINA TRANSITION (PEBLE6.SXC): From over PEBLE INT on SXC R-096 to SXC VORTAC.

SEAL BEACH TRANSITION (PEBLE6.SLI): From over PEBLE INT on SLI R-148 to SLI VORTAC.

# PEBLE SIX DEPARTURE