

(ZZ0003.ZZ000) 22195

ZZ000 THREE DEPARTURE (RNAV) AL-373 (FAA)

SAN DIEGO INTL (SAN)
SAN DIEGO, CALIFORNIA

SW-3, 22 FEB 2024 to 21 MAR 2024

RNAV 1 - DME/DME/IRU or GPS.
RADAR required for non-GPS equipped aircraft.

D-ATIS 134.8
CLINC.DEL 123.9
CPDIC 123.9
GND CON 123.9
LINDBERGH TOWER 118.3 338.225
SOCAL DEP CON 125.15 317.55



TOP ALTITUDE:
**JETS FL230/
TURBOPROPS 15000**

DEPARTURE ROUTE DESCRIPTION

TAKEOFF RUNWAY 27: Climb direct JETI , then left turn direct to cross ZZ000 between 6000 and FL230 at or below 230K, thence

. . . . on (transition). Turbojets maintain FL230, turboprops maintain 15000, expect filed altitude 10 minutes after departure.

CENZA TRANSITION (ZZ0003.CENZA)

IMPERIAL TRANSITION (ZZ0003.IPL)

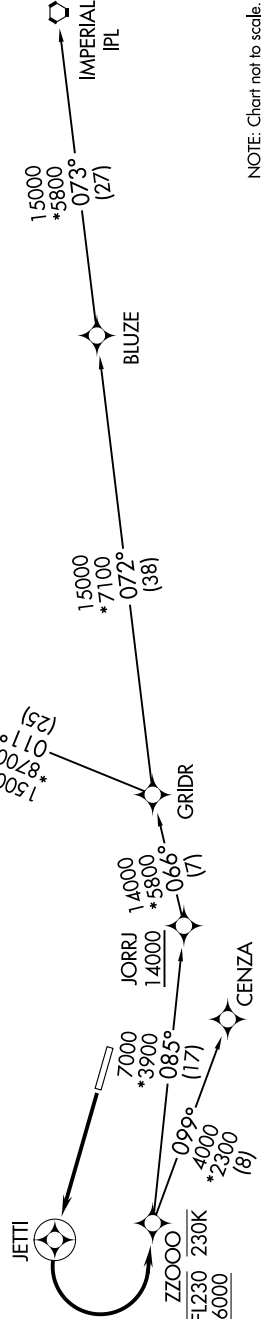
MTBAL TRANSITION (ZZ0003.MTBAL)

TAKEOFF MINIMUMS

Rwy 9: NA-ATC.

Rwy 27: Standard with minimum climb of 500' per NM to 520.

NOTE: For non-GPS equipped aircraft using MTBAL or IPL Transitions, PGY DME must be operational.



NOTE: Chart not to scale.

SW-3, 22 FEB 2024 to 21 MAR 2024

ZZ000 THREE DEPARTURE (RNAV)
(ZZ0003.ZZ000) 14JUL22

SAN DIEGO, CALIFORNIA
SAN DIEGO INTL (SAN)