

# NASNI NINE DEPARTURE (OBSTACLE) (NASNI 9 • NASNI)

NORTH ISLAND NAS (HALSEY FIELD) (KNZY)

SAN DIEGO, CALIFORNIA

ATIS ★  
 317.8  
 CLNC DEL  
 128.4 288.25  
 GND CON  
 118.0 360.675  
 NORTH ISLAND TOWER ★  
 135.1 336.4  
 SOCAL DEP CON  
 125.15 317.55

SHL-374 [USN]

Rwy	Knots	60	120	180	240	300	360
11 (a)	V/V(fpm)	275	550	825	1100	1375	1650
11 (b)	V/V(fpm)	290	580	870	1160	1450	1740
29 (c)	V/V(fpm)	420	840	1260	1680	2100	2520
29 (d)	V/V(fpm)	490	980	1470	1960	2450	2940

### Minimum Climb Rate

- (a) Military climb to 700 or 600-2 1/4 authorized in lieu of climb rate.
- (b) Civil climb to 700 or 600-2 1/4 authorized in lieu of climb rate.
- (c) Military climb to 700 or 600-2 1/2 authorized in lieu of climb rate.
- (d) Civil climb to 700 or 600-2 1/2 authorized in lieu of climb rate.

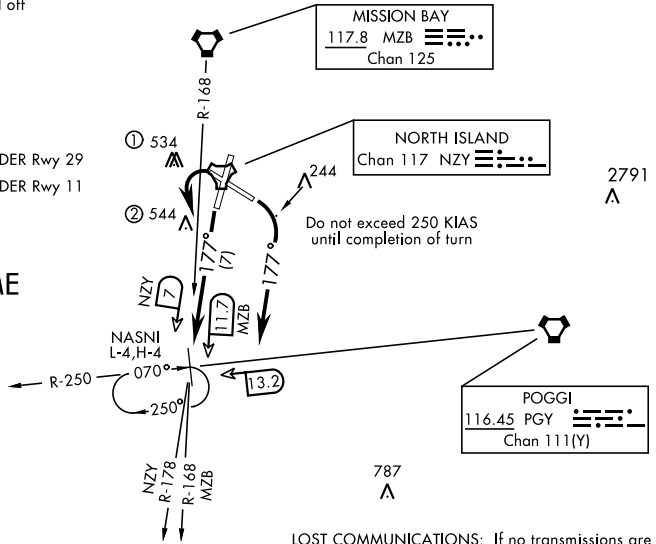
CAUTION: Rwy 29 Cross DER at or above 35'

CAT E aircraft not authorized off Rwy 11 and 29

Rwy 29 CIVIL departure dual DME required

- ① 1.4 NM from DER Rwy 29
- ② 2.4 NM from DER Rwy 11

## RADAR and DME REQUIRED



Advise ATC prior to taxi if unable to meet climb gradients, DER crossing restrictions or remain within turn restrictions of published departure for an alternate runway assignment.

LOST COMMUNICATIONS: If no transmissions are received prior to crossing the PGY VORTAC R-250 Southbound, turn direct on PGY R-250 to NASNI and hold as published, if no transmissions received within five minutes after entering holding, proceed on course, climb to filed altitude.

### DEPARTURE ROUTE DESCRIPTION

**TAKE-OFF RWY 11:** Turn right as soon as practicable climbing to 2000 via heading 177°, remain within NZY TACAN 1.4 DME to not overfly the City of Coronado, thence...

**TAKE-OFF RWY 18:** Climbing left turn to 2000 intercept the NZY R-178 (MZB R-168) to NASNI, thence...

**TAKE-OFF RWY 29 (CIVIL):** Turn left as soon as practicable climbing to 2000, remain within NZY TACAN 1 DME to not overfly Point Loma, intercept the MZB R-168 to NASNI, thence...

**TAKE-OFF RWY 29 (MILITARY):** Turn left as soon as practicable climbing to 2000, remain within NZY TACAN 1 DME to not overfly Point Loma, intercept the NZY R-178 to NASNI, thence...

....Expect RADAR vectors to join assigned route.

# NASNI NINE DEPARTURE (OBSTACLE) (NASNI 9 • NASNI)

SAN DIEGO, CALIFORNIA

NORTH ISLAND NAS (HALSEY FIELD) (KNZY)