

# VOR/DME RWY 29

VORTAC PGY <b>116.45</b> Chan <b>111(Y)</b>	APCH CRS <b>279°</b>	Rwy ldg TDZE Arprt Elev <b>7500</b> <b>26</b> <b>26</b>
---	-------------------------	--

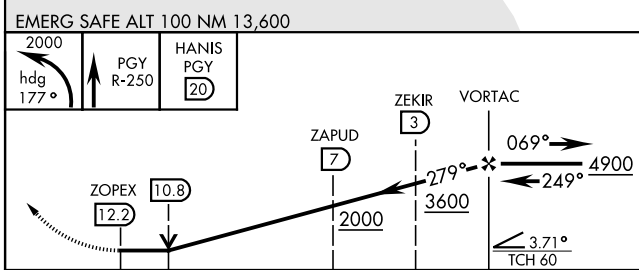
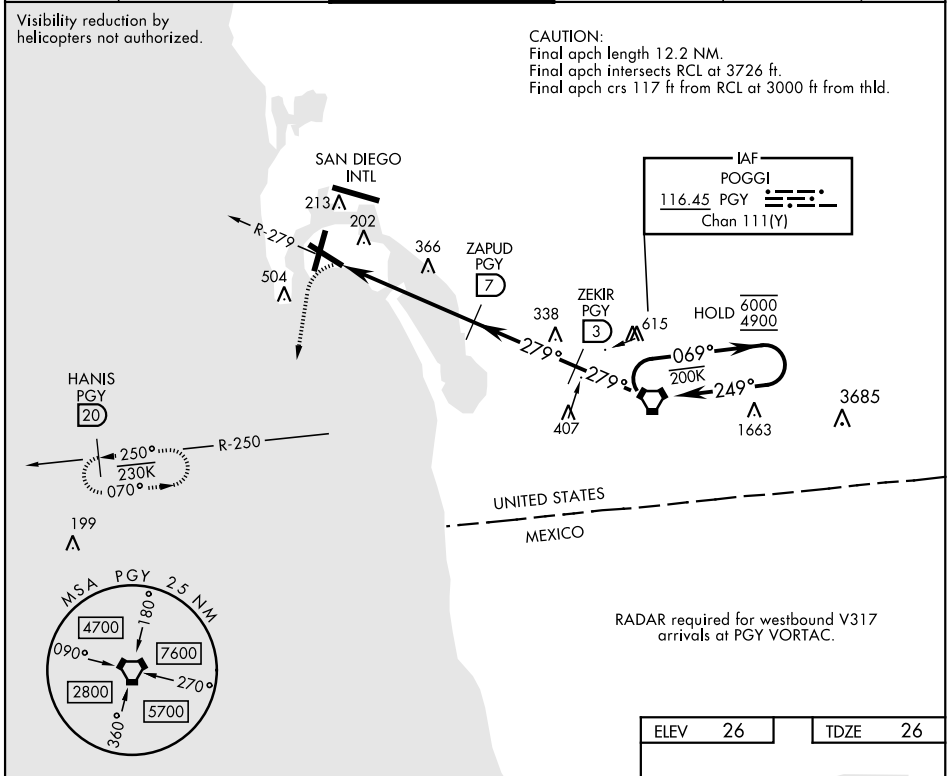
AL-374 [USN] NORTH ISLAND NAS (HALSEY FIELD) (KNZY)

\* When ALS inop, increase CAT AB vis to 1 mile, CAT CD vis to 1¾ miles.  
 \*\* Circling not authorized W of Rwy 18-36.  
 Circling authorized to Rwy 18 only.

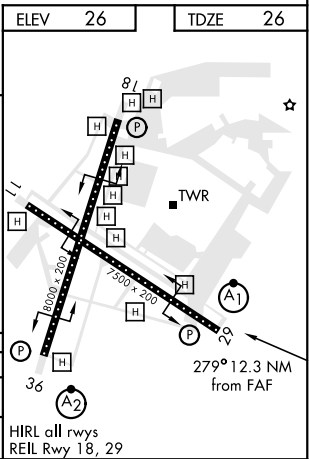


MISSED APPROACH: Climbing left turn to 2000 via hdg 177° intercept PGY VORTAC R-250 to HANIS and hold.

ATIS ★ <b>317.8</b>	SOCAL APP CON <b>125.15 317.55</b>	TOWER ★ <b>135.1 336.4</b>	GND CON <b>118.0 360.675</b>	CLNC DEL <b>128.4 288.25</b>	PAR/ASR
------------------------	---------------------------------------	-------------------------------	---------------------------------	---------------------------------	---------



EMERG SAFE ALT 100 NM 13,600	PGY R-250	HANIS PGY 20	ZEKIR 3	VORTAC
2000	hdg 177°			
2000				
3600				
4900				
4900				
0.1	5.2 NM	4 NM	3 NM	
CATEGORY	A	B	C	D
S-29 *	660-¾	634 (700-¾)	660-1⅓	634 (700-1⅓)
CIRCLING **	660-1	634 (700-1)	NOT AUTHORIZED	



# VOR/DME RWY 29

SW-3, 22 FEB 2024 to 21 MAR 2024

SW-3, 22 FEB 2024 to 21 MAR 2024