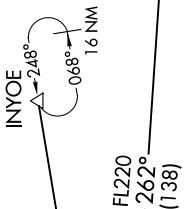
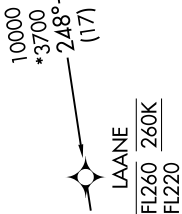
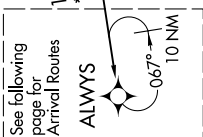


# ALWAYS TWO ARRIVAL (RNAV) Transition Routes

OAKLAND CENTER  
134.37 281.5  
NORCAL APP CON  
128.325 254.3  
D-ATIS  
113.7 115.8 118.85  
SAN FRANCISCO TOWER  
120.5 269.1  
GND CON  
121.8



- NOTE: RADAR required.  
 NOTE: RNAV 1  
 NOTE: DME/DME/IRU or GPS required.  
 NOTE: Expect "descend via" clearance from Oakland Center.  
 Northern California TRACON will assign landing runway.

INYOE TRANSITION (INYOE.ALWYS2)  
RUSME TRANSITION (RUSME.ALWYS2)

(CONTINUED ON FOLLOWING PAGE)

NOTE: Chart not to scale.