

# CIITY THREE DEPARTURE (RNAV)

AL-375 (FAA)

SAN FRANCISCO INTL (SFO)  
SAN FRANCISCO, CALIFORNIA

SW-2, 22 FEB 2024 to 21 MAR 2024

**TOP ALTITUDE:**  
**FL190**

### TAKEOFF MINIMUMS

Rwys 10L/R: Standard with minimum climb of 500' per NM to 520.

Rwys 19L/R: Standard with minimum climb of 575' per NM to 2000.

### DEPARTURE ROUTE DESCRIPTION

**TAKEOFF RUNWAY 10L:** Climb heading 104° to 520, then direct ORYAN, then on track 102° to SAHEY, then on track 101° to cross CIITY at or above 5000. Thence. . . .

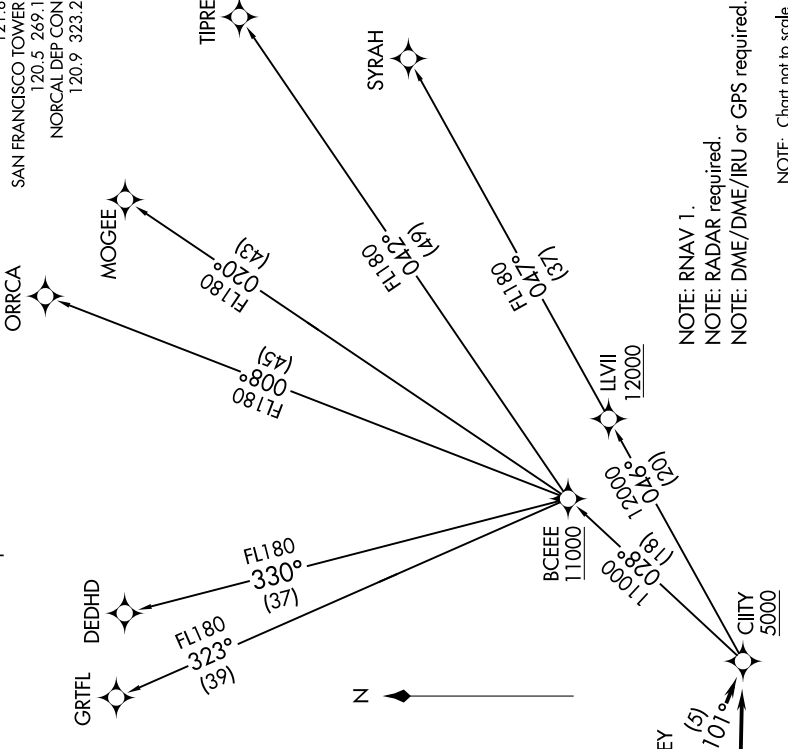
**TAKEOFF RUNWAY 10R:** Climb heading 104° to 520, then direct URRSA, then on track 101° to SAHEY, then on track 101° to cross CIITY at or above 5000. Thence. . . .

**TAKEOFF RUNWAYS 19L/19R:** Climb heading 194° to 520, then left turn direct to cross CIITY at or above 5000. Thence. . . .

. . . on (transition). Maintain FL190. Expect filed altitude 10 minutes after departure.

- DEDHD TRANSITION (CIITY3.DEDHD)
- GRITFL TRANSITION (CIITY3.GRITFL)
- MOGEE TRANSITION (CIITY3.MOGEE)
- ORRCA TRANSITION (CIITY3.ORRCA)
- SYRAH TRANSITION (CIITY3.SYRAH)
- TIPRE TRANSITION (CIITY3.TIPRE)

D-ATIS  
113.7 115.8 118.85  
CLNC DEL  
118.2  
CPDIC  
GND CON  
121.8  
SAN FRANCISCO TOWER  
120.5 269.1  
NORCAL DEP CON  
120.9 323.2



NOTE: RNAV 1.  
NOTE: RADAR required.  
NOTE: DME/DME/IRU or GPS required.

NOTE: Chart not to scale.

# CIITY THREE DEPARTURE (RNAV)

SW-2, 22 FEB 2024 to 21 MAR 2024