

GBAS CH 21859 G19B	APP CRS 194°	Rwy Idg TDZE Apt Elev	7650 11 13
--	------------------------	-----------------------------	---------------------------------------

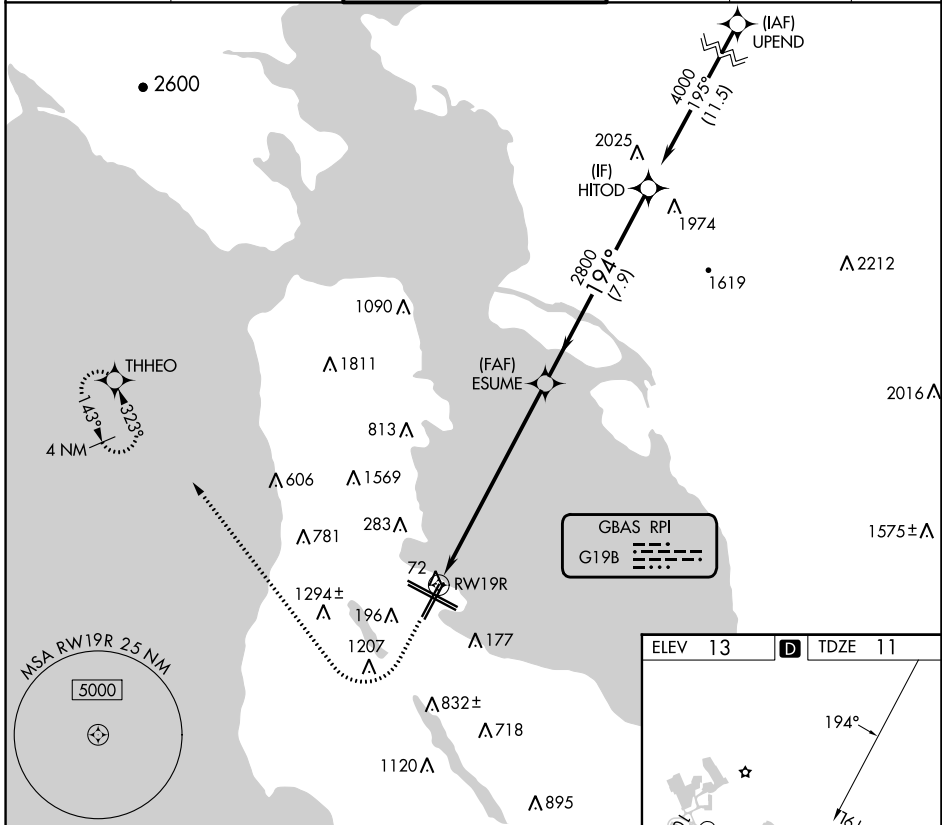
GLS RWY 19R

SAN FRANCISCO INTL (SFO)

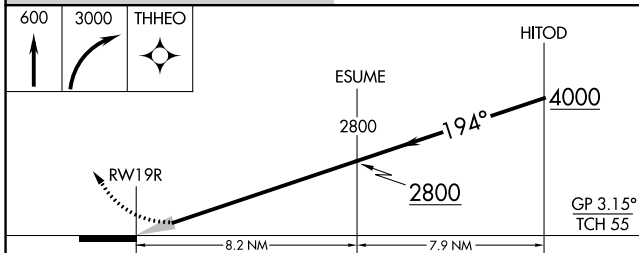
RNP APCH-GPS.	
NA	Autopilot coupled approach NA below 321 feet.

MISSED APPROACH: Climb to 600 then climbing right turn to 3000 direct THHEO and hold. Missed approach requires minimum climb of 395 feet per NM to 2100.

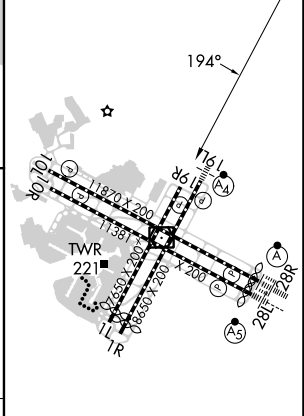
D-ATIS 113.7 115.8 118.85	NORCAL APP CON 134.5 338.2	SAN FRANCISCO TOWER 120.5 269.1	GND CON 121.8	CLNC DEL 118.2	CPDLC
---	--------------------------------------	---	-------------------------	--------------------------	-------



GBAS RPI
G19B



ELEV 13	D	TDZE 11
---------	----------	---------



CATEGORY	A	B	C	D
GLS DA		321/45	310 (400-7%)	

TDZ/CL Rwy 19L and 28R
REIL Rwy 1L, 1R and 10L
HIRL all Rwy

SW-2, 22 FEB 2024 to 21 MAR 2024

SW-2, 22 FEB 2024 to 21 MAR 2024