

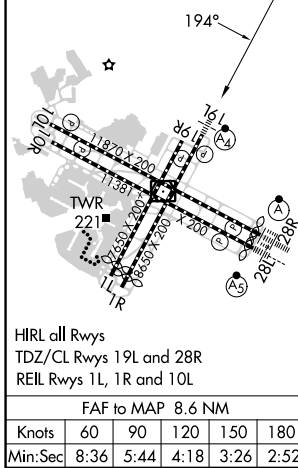
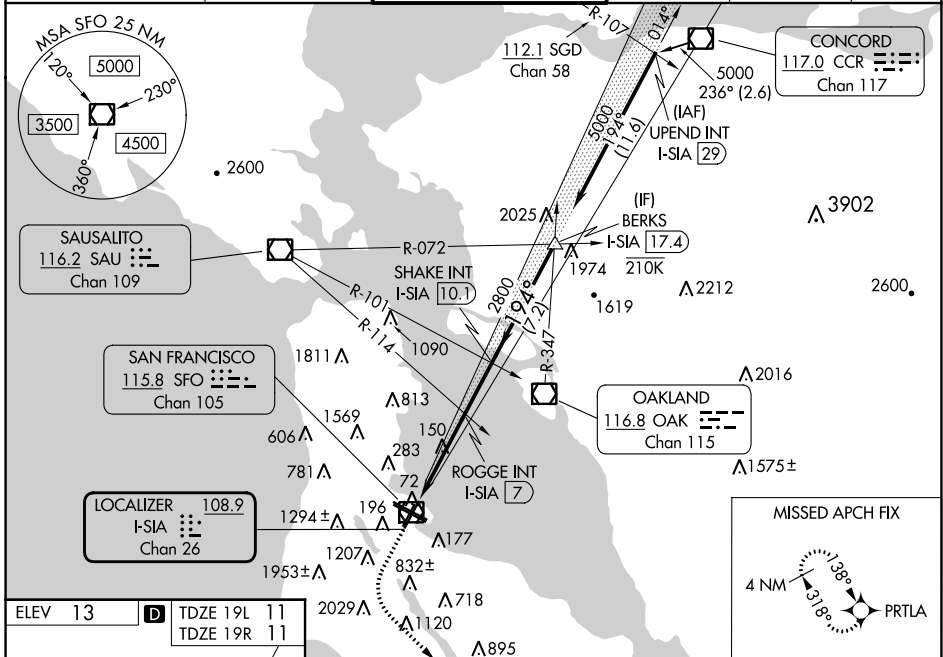
LOC/DME I-SIA <b>108.9</b> Chan <b>26</b>	APP CRS <b>194°</b>	Rwy Idg TDZE Apt Elev	19L <b>8650</b> <b>11</b> <b>13</b>	19R <b>7650</b> <b>11</b> <b>13</b>
---	------------------------	-----------------------------	--	--

# ILS or LOC RWY 19L

SAN FRANCISCO INTL (SFO)

RNP APCH - GPS.	MALSf Rwy 19L	MISSED APPROACH: Climb to 1100 then climbing left turn to 4000 direct to PRTLA and hold. *Missed approach requires minimum climb of 357 feet per NM to 2000.
-----------------	---------------	---

D-ATIS <b>113.7 115.8 118.85</b>	NORCAL APP CON <b>134.5 338.2</b>	SAN FRANCISCO TOWER <b>120.5 269.1</b>	GND CON <b>121.8</b>	CLNC DEL <b>118.2</b>	CPDLC
-------------------------------------	--------------------------------------	---	-------------------------	--------------------------	-------



SW-2, 22 FEB 2024 to 21 MAR 2024

SW-2, 22 FEB 2024 to 21 MAR 2024