

(NIITE3.NIITE) 17341

NIITE THREE DEPARTURE (RNAV)

AL-375 (FAA)

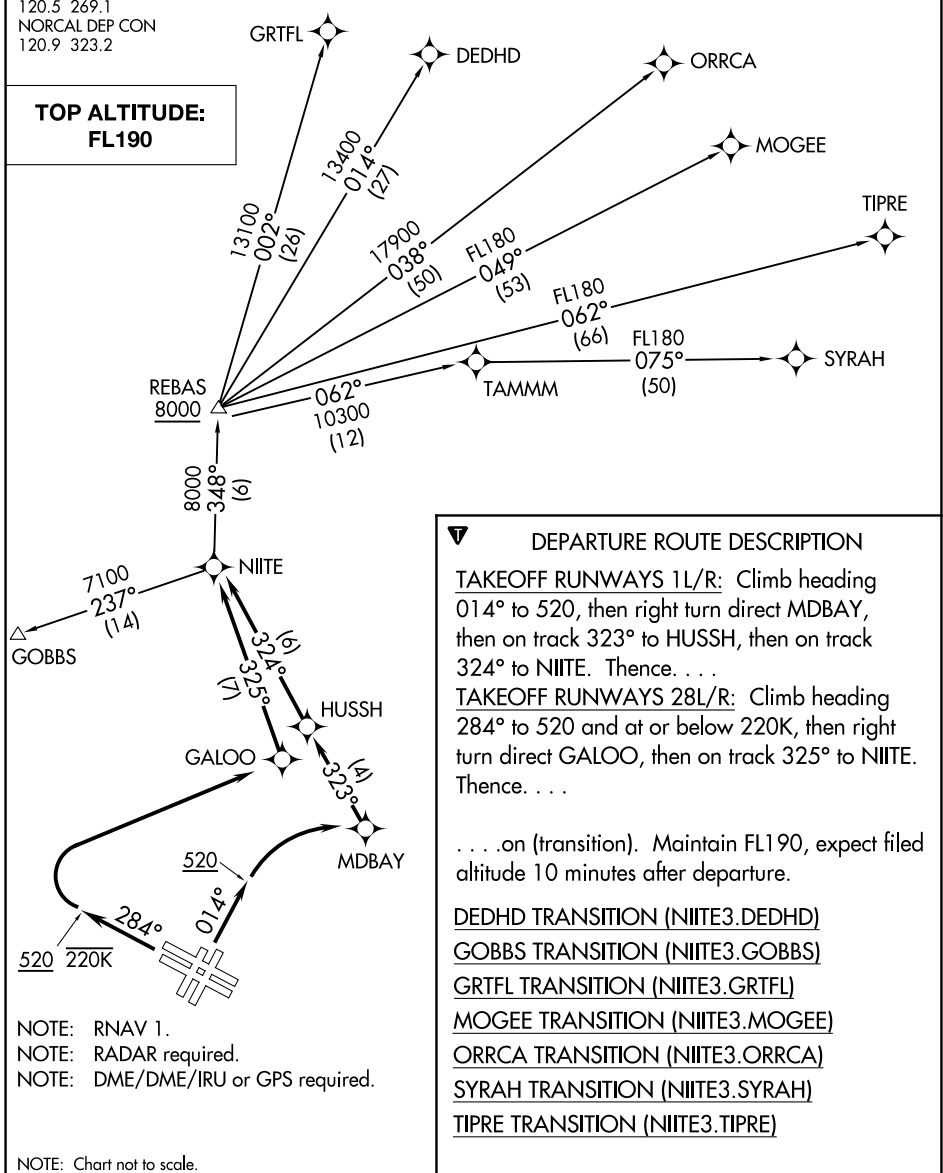
SAN FRANCISCO INTL (SFO)
SAN FRANCISCO, CALIFORNIA

D-ATIS
113.7 115.8 118.85
CLNC DEL
118.2
CPDLC
GND CON
121.8
SAN FRANCISCO TOWER
120.5 269.1
NORCAL DEP CON
120.9 323.2

TAKEOFF MINIMUMS

Rwys 1L/R: Standard with a minimum climb of 500' per NM to 520.
Rwy 28L: Standard with minimum climb of 535' per NM to 2100.
Rwy 28R: Standard with minimum climb of 560' per NM to 2100.

**TOP ALTITUDE:
FL190**



DEPARTURE ROUTE DESCRIPTION

TAKEOFF RUNWAYS 1L/R: Climb heading 014° to 520, then right turn direct MDBAY, then on track 323° to HUSSH, then on track 324° to NIITE. Thence. . .

TAKEOFF RUNWAYS 28L/R: Climb heading 284° to 520 and at or below 220K, then right turn direct GALOO, then on track 325° to NIITE. Thence. . .

. . . on (transition). Maintain FL190, expect filed altitude 10 minutes after departure.

DEDHD TRANSITION (NIITE3.DEDHD)
GOBBS TRANSITION (NIITE3.GOBBS)
GRNFL TRANSITION (NIITE3.GRNFL)
MOGEE TRANSITION (NIITE3.MOGEE)
ORRCA TRANSITION (NIITE3.ORRCA)
SYRAH TRANSITION (NIITE3.SYRAH)
TIPRE TRANSITION (NIITE3.TIPRE)

NOTE: RNAV 1.
NOTE: RADAR required.
NOTE: DME/DME/IRU or GPS required.

NOTE: Chart not to scale.

NIITE THREE DEPARTURE (RNAV)

(NIITE3.NIITE) 20AUG15

SAN FRANCISCO, CALIFORNIA
SAN FRANCISCO INTL (SFO)

SW-2, 22 FEB 2024 to 21 MAR 2024

SW-2, 22 FEB 2024 to 21 MAR 2024