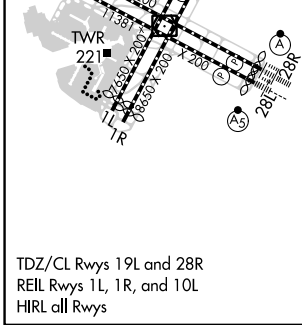
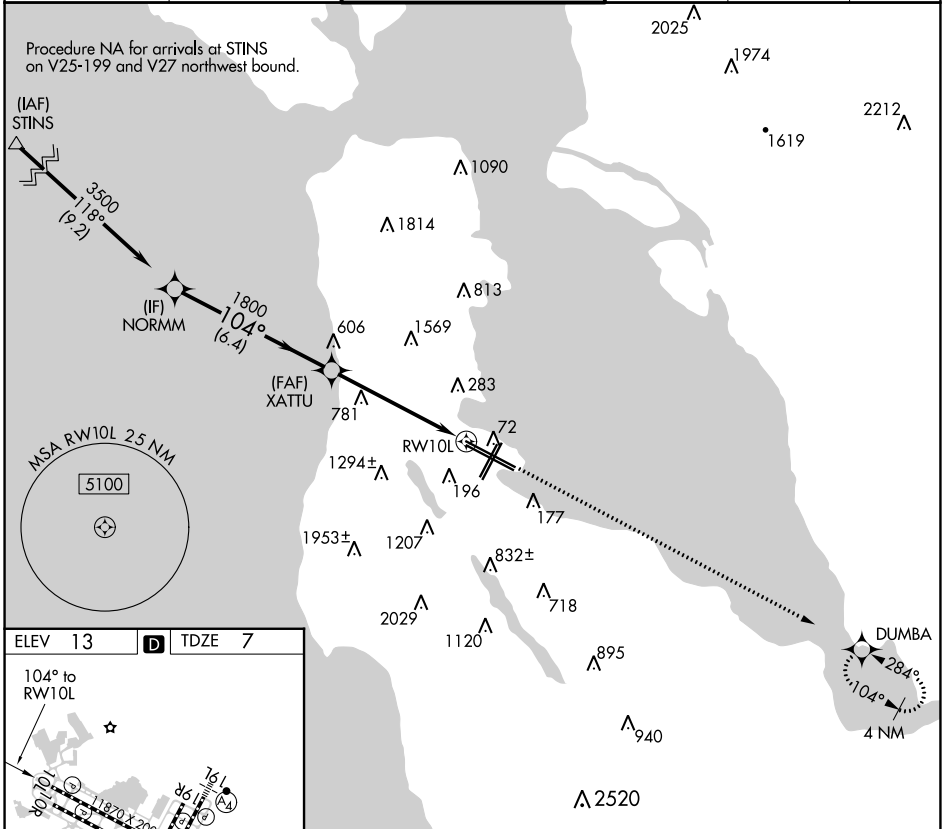


APP CRS 104°	Rwy Idg 11193
	TDZE 7
	Apt Elev 13

RNAV (GPS) RWY 10L

SAN FRANCISCO INTL (SFO)

<p>▽ DME/DME RNP-0.3 NA. △ Helicopter visibility reduction below RVR 4000 NA.</p>		<p>MISSED APPROACH: Climb to 4000 direct DUMBA and hold.</p>			
D-ATIS 113.7 115.8 118.85	NORCAL APP CON 134.5 338.2	SAN FRANCISCO TOWER 120.5 269.1	GND CON 121.8	CLNC DEL 118.2	CPDLC



TDZ/CL Rwy 19L and 28R
REIL Rwy 1L, 1R, and 10L
HIRL all Rwy

NORMM	VGSi and descent angles not coincident (VGSi Angle 3.00/TCH 80).			4000	DUMBA
3500	104°	1800	3.5 NM to RWY 10L		
			3.00° TCH 55		
	6.4 NM	2 NM	3.5 NM		
CATEGORY	A	B	C	D	
LNAV MDA	1200/60 1193 (1200-1¼)	1200-1½ 1193 (1200-1½)	1200-3	1193 (1200-3)	

SW-2, 22 FEB 2024 to 21 MAR 2024

SW-2, 22 FEB 2024 to 21 MAR 2024