

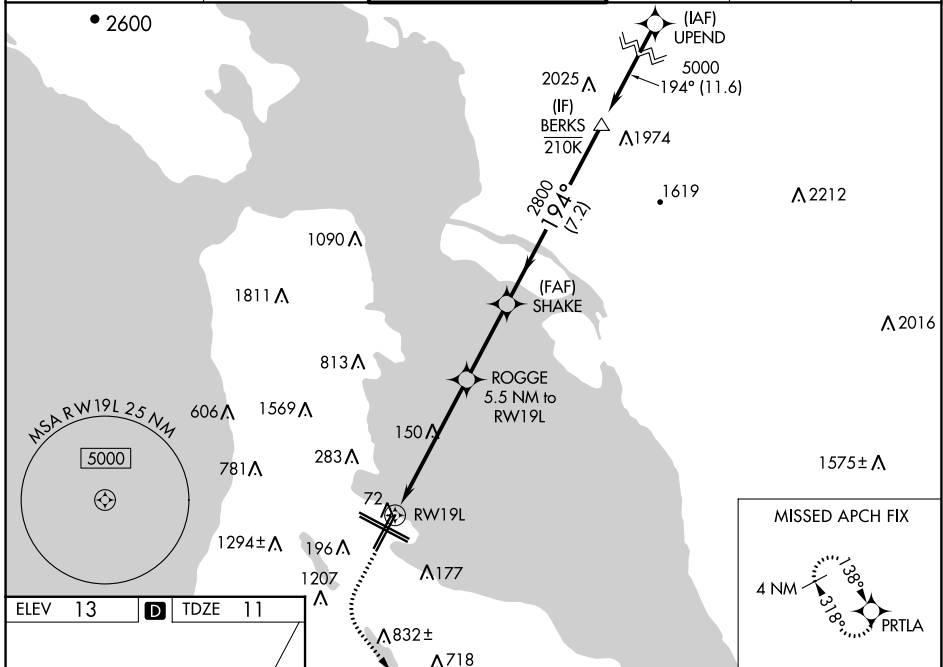
WAAS CH 58015 W19A	APP CRS 194°	Rwy Idg 8650 TDZE 11 Apt Elev 13
--	------------------------	---

RNAV (GPS) RWY 19L

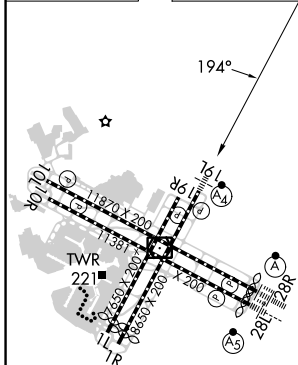
SAN FRANCISCO INTL (SFO)

RNP APCH - GPS.	MALSF — ④	MISSED APPROACH: Climb to 1100 then climbing left turn to 4000 direct PRTLA and hold. *Missed approach requires minimum climb of 357 feet per NM to 2000.
-----------------	-----------------	--

D-ATIS 113.7 115.8 118.85	NORCAL APP CON 134.5 338.2	SAN FRANCISCO TOWER 120.5 269.1	GND CON 121.8	CLNC DEL 118.2	CPDLC
-------------------------------------	--------------------------------------	---	-------------------------	--------------------------	-------



ELEV 13	D	TDZE 11
---------	----------	---------



1100	4000	PRTLA	BERKS
VGSI and RNAV glidepath not coincident (VGSI Angle 3.00/TCH 71).			
RW19L	ROGGE 5.5 NM to RW19L	SHAKE	5000
3.2 NM	2.3 NM	3.1 NM	7.2 NM
GP 3.00° TCH 55			

CATEGORY	A	B	C	D
LPV DA*		293/40	282 (300-¾)	
LPV DA		656-1½	645 (700-1½)	
LNAV/VNAV DA*		350/40	339 (400-¾)	
LNAV/VNAV DA		794-2	783 (800-2)	
LNAV MDA	1100/55 1089 (1100-1)	1100-1¼ 1089 (1100-1¼)	1100-2½	1089 (1100-2½)

TDZ/CL Rwy 19L and 28R
REIL Rwy 1L, 1R and 10L
HIRL all Rwy

SW-2, 22 FEB 2024 to 21 MAR 2024

SW-2, 22 FEB 2024 to 21 MAR 2024