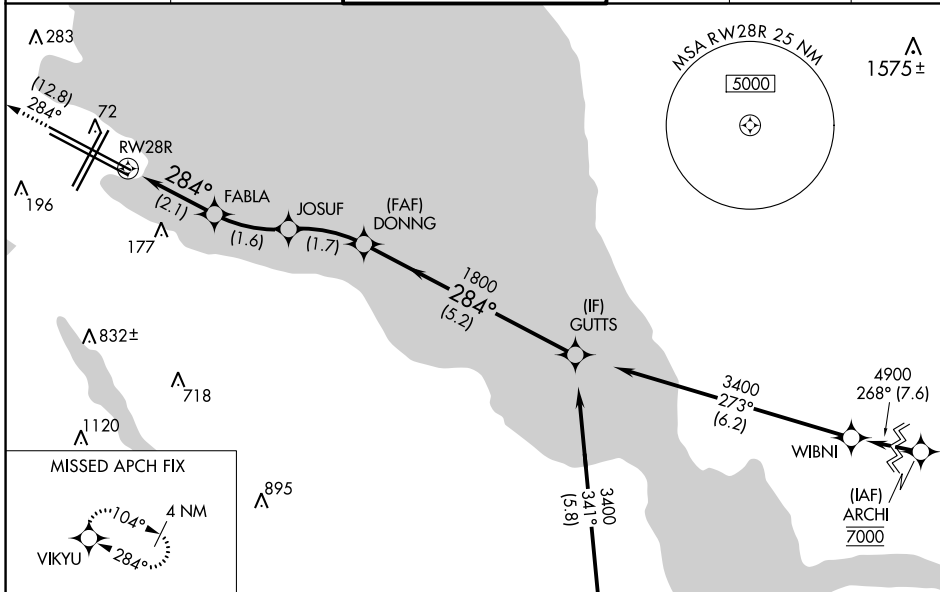


APP CRS 284°	Rwy Idg TDZE Apt Elev	11236 13 13
------------------------	-----------------------------	--

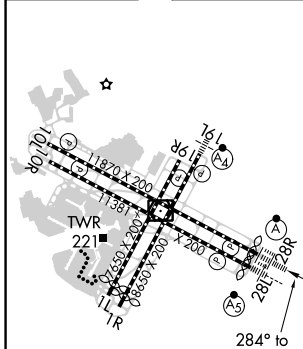
RNAV (RNP) Y RWY 28R

SAN FRANCISCO INTL (SFO)

RNP AR APCH, RF required. ▼ For uncompensated Baro-VNAV systems, procedure NA below 3°C or above 54°C. For inop ALS, increase RNP 0.11 all Cats visibility to RVR 4000 and RNP 0.30 all Cats visibility to RVR 4500.		ALSF-2 	MISSED APPROACH: Climb to 3000 on track 284° to VIKYU and hold. * Missed approach requires minimum climb of 250 feet per NM to 1600. # Missed approach requires minimum climb of 350 feet per NM to 2100.		
D-ATIS 113.7 115.8 118.85	NORCAL APP CON 134.5 338.2	SAN FRANCISCO TOWER 120.5 269.1	GND CON 121.8	CLNC DEL 118.2	CPDLC



ELEV 13	D	TDZE 13
---------	----------	---------



3000 ↑ fr 284°	VIKYU	VGSI and RNAV glidepath not coincident (VGSI Angle 3.00/TCH 68)		GUTTS
		FABLA	JOSUF	DONNG
		743	1264	1800
		RWY 28R		
		284°		284°
		2.1 NM	1.6 NM	1.7 NM
				5.2 NM
				3400
				GP 3.00° TCH 55

CATEGORY	A	B	C	D
RNP 0.11 DA*		263/24	250 (300-½)	
RNP 0.30 DA#		326/24	313 (400-½)	

AUTHORIZATION REQUIRED

SW-2, 22 FEB 2024 to 21 MAR 2024

SW-2, 22 FEB 2024 to 21 MAR 2024