

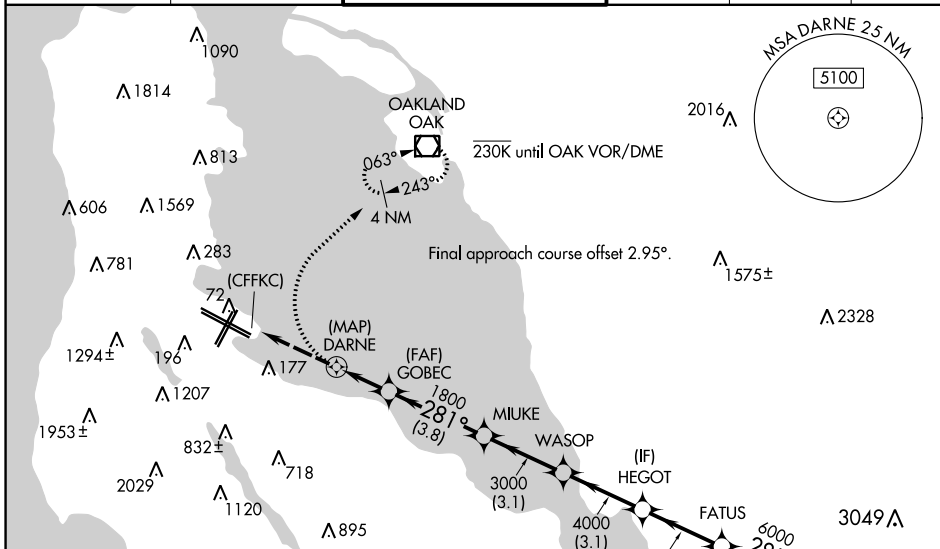
APP CRS	Rwy Idg	11236
281°	TDZE	13
	Apt Elev	13

RNAV (GPS) X RWY 28R

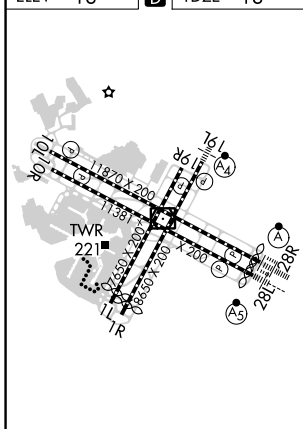
SAN FRANCISCO INTL (SFO)

<p>NA</p> <p>Runway 28L and 28R separated by 750 feet centerline to centerline. DME/DME RNP-0.3 NA. When executing a missed approach or go-around, unless otherwise instructed by ATC, initially turn right to 030° utilizing heading mode. Inoperative table does not apply. For uncompensated Baro-VNAV systems, LNAV/VNAV NA below 2°C (36°F) or above 54°C (130°F).</p> <p>*If a go-around executed after passing DARNE, go-around requires a minimum climb of 380 feet per NM to 1800.</p>	<p>ALSF-2</p>	<p>MISSED APPROACH:</p> <p>Climbing right turn to 3000 on heading 030° then direct OAK VOR/DME and hold.</p>

D-ATIS 113.7 115.8 118.85	NORCAL APP CON 134.5 338.2	SAN FRANCISCO TOWER 120.5 269.1	GND CON 121.8	CLNC DEL 118.2	CPDLC
-------------------------------------	--------------------------------------	---	-------------------------	--------------------------	-------



ELEV 13	D	TDZE 13
---------	----------	---------



TDZ/CL Rwy 19L and 28R
REIL Rwy 1L, 1R, and 10L
HIRL all Rwy

<p>RADAR REQUIRED</p> <p>3000 OAK VGS1 and RNAV glidepath not coincident (VGS1 Angle 3.00/TCH 68).</p>	
<p>ANETE 7000</p> <p>FATUS 6000</p> <p>HEGOT 4000</p> <p>WASOP 3000</p> <p>MIUKE 3000</p> <p>GOBEC 1800</p> <p>DARNE 1140</p> <p>(CFFKC) 1140</p> <p>GP 3.00° TCH 55</p>	
CATEGORY	A B C D
LNAV/VNAV DA*	1140-4 1127 (1200-4)

SW-2, 22 FEB 2024 to 21 MAR 2024

SW-2, 22 FEB 2024 to 21 MAR 2024