

WAAS CH <b>53533</b> <b>W19B</b>	APP CRS <b>194°</b>	Rwy Idg <b>7650</b> TDZE <b>11</b> Apt Elev <b>13</b>
--	------------------------	---

# RNAV (GPS) Y RWY 19R

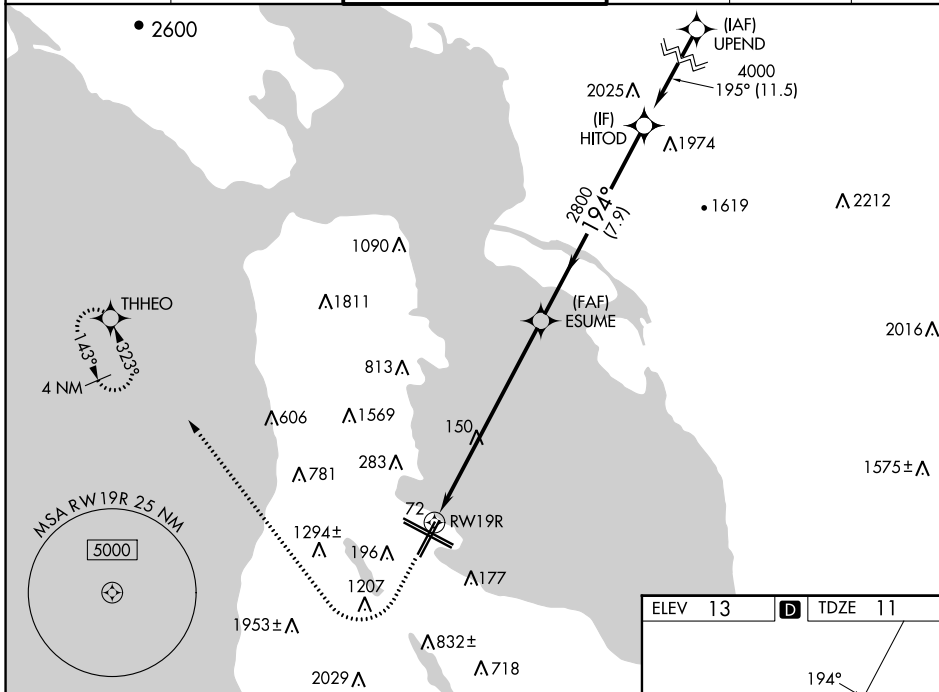
SAN FRANCISCO INTL (SFO)

RNP APCH-GPS.

⚠ LNAV procedure NA during simultaneous operations. Use of FD or AP required during simultaneous operations. For uncompensated Baro-VNAV systems, LNAV/VNAV NA below 4°C or above 54°C. Simultaneous approach authorized. Simultaneous operations require use of vertical guidance; maintain last assigned altitude until established on glidepath. Simultaneous approach NA below 12°C (52°F).

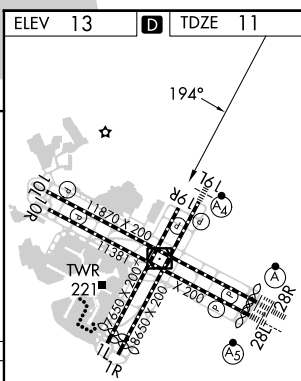
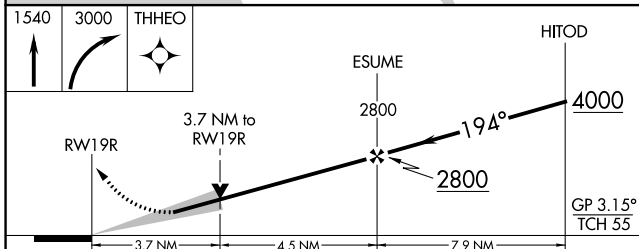
MISSED APPROACH: Climb to 1540 then climbing right turn to 3000 direct THHEO and hold.

D-ATIS <b>113.7 115.8</b> <b>118.85</b>	NORCAL APP CON <b>134.5 338.2</b>	SAN FRANCISCO TOWER <b>120.5 269.1</b>	GND CON <b>121.8</b>	CLNC DEL <b>118.2</b>	CPDLC
---	--------------------------------------	---	-------------------------	--------------------------	-------



SW-2, 22 FEB 2024 to 21 MAR 2024

SW-2, 22 FEB 2024 to 21 MAR 2024



CATEGORY	A	B	C	D
LPV DA	1005-4		994 (1000-4)	
LNAV/VNAV DA	878-2½		867 (900-2½)	
LNAV MDA	1320-1¼ 1309 (1400-1¼)	1320-1½ 1309 (1400-1½)	1320-3	1309 (1400-3)

TDZ/CL Rwy 19L and 28R  
REIL Rwy 1L, 1R and 10L  
HIRL all Rwy