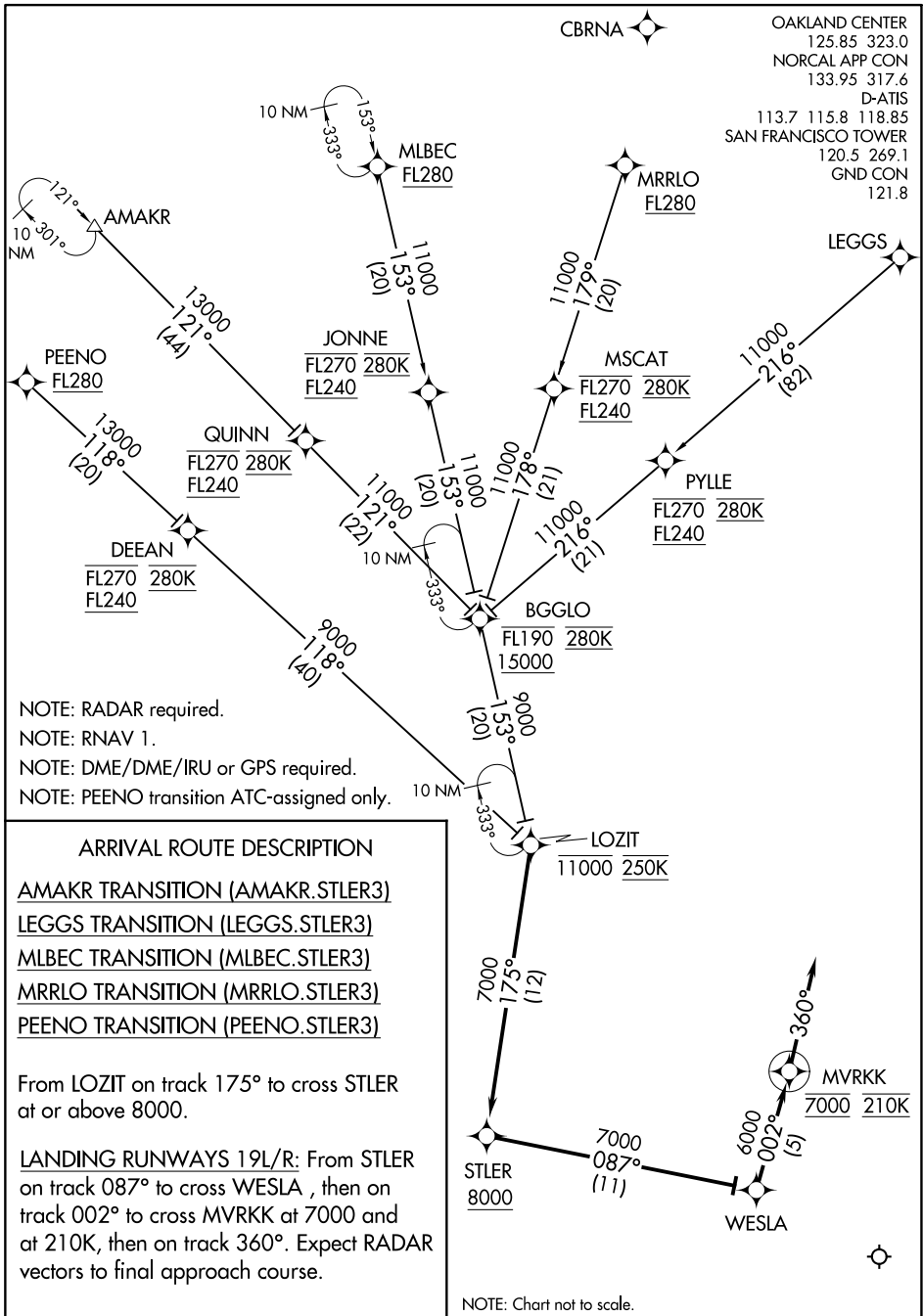


(LOZIT.STLER3) 18256

# STLER THREE ARRIVAL (RNAV)

AL-375 (FAA)

SAN FRANCISCO INTL (SFO)  
SAN FRANCISCO, CALIFORNIA



NOTE: RADAR required.  
 NOTE: RNAV 1.  
 NOTE: DME/DME/IRU or GPS required.  
 NOTE: PEENO transition ATC-assigned only.

### ARRIVAL ROUTE DESCRIPTION

- AMAKR TRANSITION (AMAKR.STLER3)
- LEGGS TRANSITION (LEGGS.STLER3)
- MLBEC TRANSITION (MLBEC.STLER3)
- MRRLO TRANSITION (MRRLO.STLER3)
- PEENO TRANSITION (PEENO.STLER3)

From LOZIT on track 175° to cross STLER at or above 8000.

LANDING RUNWAYS 19L/R: From STLER on track 087° to cross WESLA, then on track 002° to cross MVRKK at 7000 and at 210K, then on track 360°. Expect RADAR vectors to final approach course.

NOTE: Chart not to scale.

SW-2, 22 FEB 2024 to 21 MAR 2024

SW-2, 22 FEB 2024 to 21 MAR 2024

# STLER THREE ARRIVAL (RNAV)

(LOZIT.STLER3) 13SEP18

SAN FRANCISCO, CALIFORNIA  
SAN FRANCISCO INTL (SFO)