


WAAS CH <b>78306</b> <b>W07A</b>	APP CRS <b>074°</b>	Rwy Idg TDZE Apt Elev	<b>6052</b> <b>13</b> <b>14</b>
--	------------------------	-----------------------------	---------------------------------------

# RNAV (GPS) RWY 7

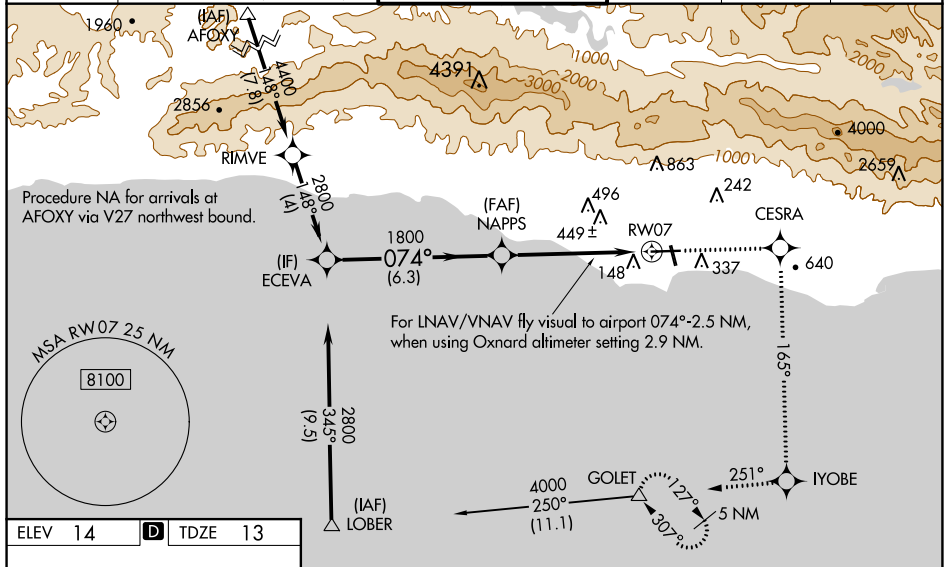
SANTA BARBARA MUNI (SBA)

RNP APCH-GPS.

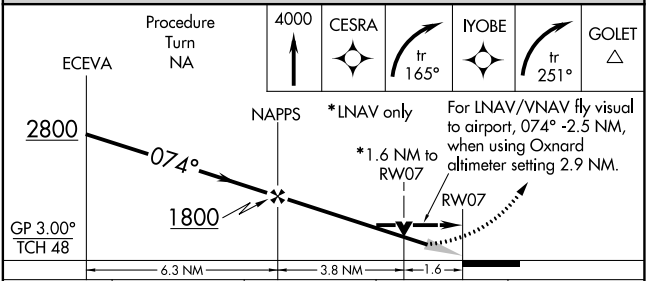
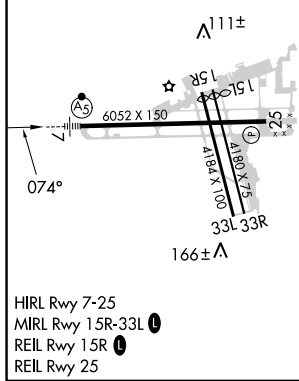
**⚠** Inop table does not apply to LNAV/VNAV. For inop MALSR when using Oxnard altimeter setting, increase LPV all Cats visibility to 1½, and LNAV Cat C to 1¾, Cat D to 2. For inop MALSR, increase LPV all Cats visibility to RVR 6000. For uncompensated Baro-VNAV systems, LNAV/VNAV NA below -15°C or above 49°C. Baro-VNAV NA when using Oxnard altimeter setting. When local altimeter setting not received, use Oxnard altimeter setting and increase all DAs/MDAs 100 feet, and increase, LNAV/VNAV visibility Cat C and D ½ mile, LNAV Cat C to RVR 6000, Cat D ¼ mile, Circling Cat A visibility ½ mile, Cat C visibility ½ mile. VDP NA when using Oxnard altimeter setting. Circling Rwy 15R NA at night. Circling NA for Cats C and D north of Rwy 7-25.

**MALSR**  
 MISSED APPROACH: Climb to 4000 direct CESRA and right turn via 165° track to IYOBE and right turn via 251° track to GOLET and hold, continue climb-in-hold to 4000.

ATIS <b>132.65</b>	SANTA BARBARA APP CON* <b>120.55 319.15</b> (151°-329°) <b>125.4 291.1</b> (330°-150°)	SANTA BARBARA TOWER* <b>119.7</b> (CTAF) <b>0 254.35</b>	GND CON <b>121.7</b>	CLNC DEL <b>132.9</b>	UNICOM <b>122.95</b>
-----------------------	--	---	-------------------------	--------------------------	-------------------------



ELEV 14	<b>D</b>	TDZE 13
---------	----------	---------



CATEGORY	A	B	C	D
LPV DA	380/40 367 (400-¾)			
LNAV/VNAV DA	866-2	853 (900-2)	866-2½ 853 (900-2½)	866-2¾ 853 (900-2¾)
LNAV MDA	560/24	547 (600-½)	560/50 547 (600-1)	560/60 547 (600-1¼)
CIRCLING	800-1 786 (800-1)	800-1¼ 786 (800-1¼)	800-2¼ 786 (800-2¼)	1000-3 986 (1000-3)

SW-3, 22 FEB 2024 to 21 MAR 2024

SW-3, 22 FEB 2024 to 21 MAR 2024