

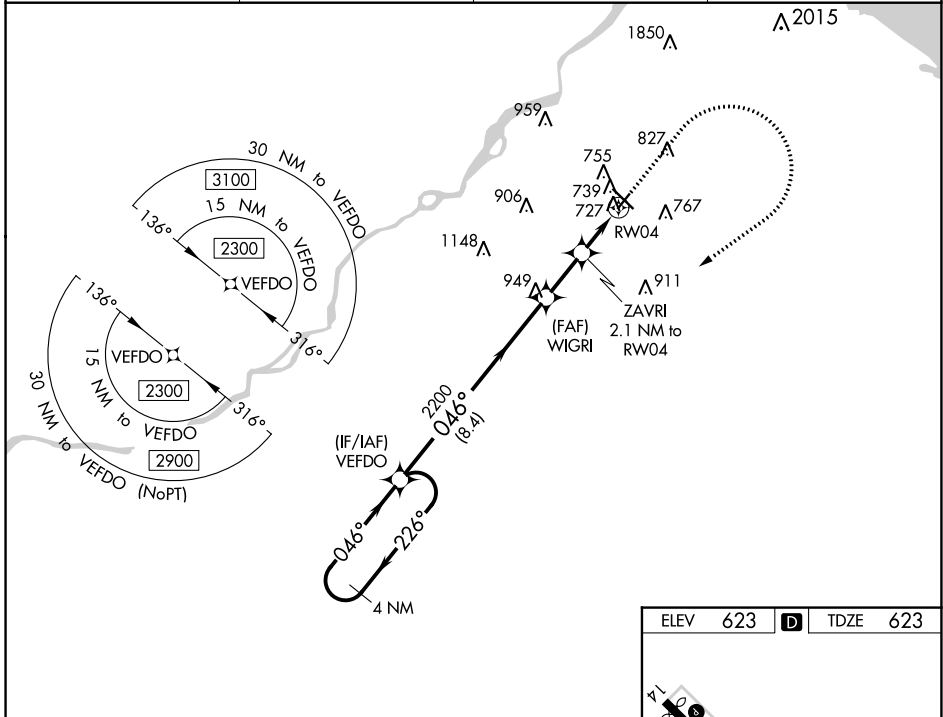
WAAS CH <b>82223</b> <b>W04A</b>	APP CRS <b>046°</b>	Rwy Idg TDZE Apt Elev	<b>3699</b> <b>623</b> <b>623</b>
--	------------------------	-----------------------------	---

# RNAV (GPS) RWY 4

TOLEDO EXEC (TDZ)

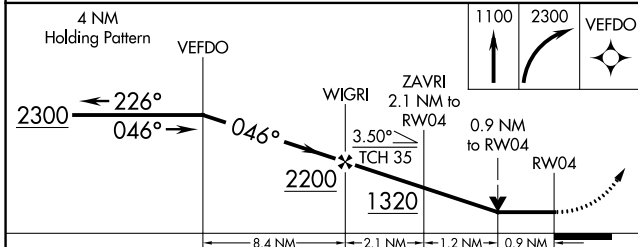
RNP APCH.		MISSED APPROACH: Climb to 1100 then climbing right turn to 2300 direct VEFDO and hold.
<p><b>▼</b> Circling Rwy 14 NA at night. Rwy 4 helicopter visibility reduction below 3/4 SM NA. When local altimeter setting not received, use Toledo Express altimeter setting and increase all MDA 60 feet, LP Cats C/D visibility 1/8 mile, increase LNAV and Circling Cats C/D visibility 1/4 mile.</p> <p><b>▲</b></p>		

ASOS <b>121.575</b>	TOLEDO APP CON <b>126.1 307.0</b>	CLNC DEL <b>125.6</b>	UNICOM <b>123.05 (CTAF) 0</b>
------------------------	--------------------------------------	--------------------------	----------------------------------

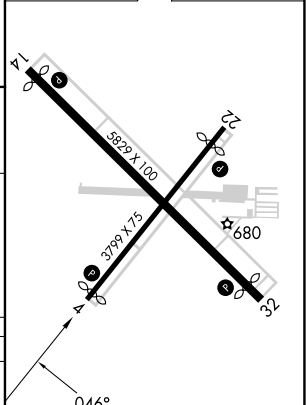


EC-2, 22 FEB 2024 to 21 MAR 2024

EC-2, 22 FEB 2024 to 21 MAR 2024



ELEV	623	D	TDZE	623
------	-----	---	------	-----



CATEGORY	A	B	C	D
LP MDA		980-1	357 (400-1)	
LNAV MDA		1000-1	377 (400-1)	
<b>C</b> CIRCLING	1080-1 457 (500-1)	1100-1 477 (500-1)	1200-1½ 577 (600-1½)	1320-2¼ 697 (700-2¼)

MIRL Rwy 4-22 and 14-32 0  
REIL Rwy 4, 14, and 22 0