

ILS X or LOC X RWY 20

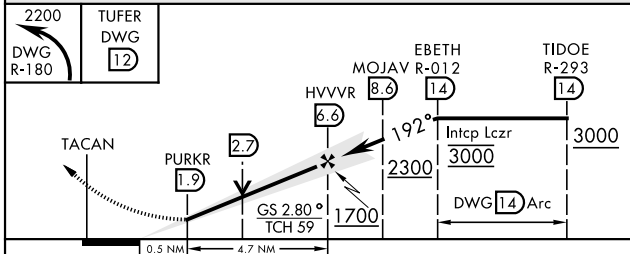
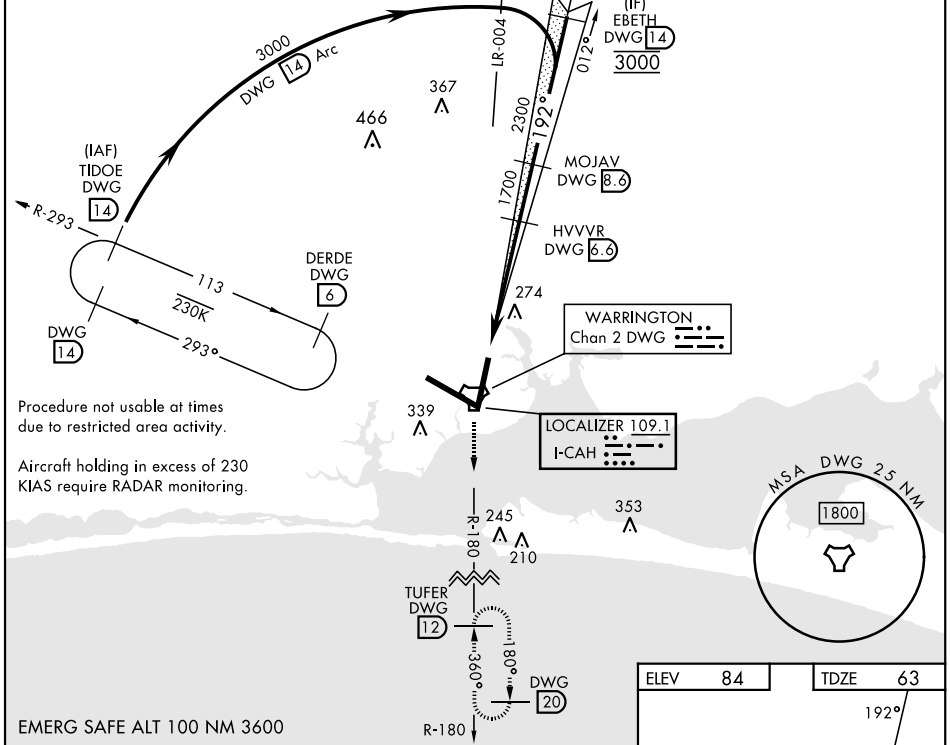
AL-436 [USAF] EGLIN AFB/DESTIN-FT WALTON BEACH (KVPS)

LOC I-CAH 109.1	APCH CRS 192°	Rwy Ldg 10,001 TDZE 63 Arprt Elev 84
---------------------------	-------------------------	---

DME or RADAR required for LOC approach.		ALSIF-1 (A1)	MISSED APPROACH: Climb to 2200 on DWG R-180 to 12 DME/TUFER and hold.
* When ALS inop, increase RVR to 40 and vis to 3/4 mile.			

ATIS * 134.625 273.5	APP CON 125.1 281.45 271°-089° 132.1 360.6 090°-270°	TOWER 118.2 353.65	GND CON 121.8 335.8	CLNC DEL 127.7 377.2
--------------------------------	--	------------------------------	-------------------------------	--------------------------------

** When ALS inop, increase CAT AB RVR to 55 and vis 1 mile, CAT CDE RVR to 60 and vis to 1 1/2 miles. 295°



CATEGORY	A	B	C	D	E
S-ILS 19 *	260/24		200	(200-1/2)	
S-LOC 19 **	480/24	420 (400-1/2)	480/40	420 (400-3/4)	
CIRCLING	660-1	576 (600-1)	760-2 676 (700-2)	760-2 1/4 676 (700-2 1/4)	760-2 1/2 676 (700-2 1/2)

ELEV 84	TDZE 63
---------	---------

HIRL all rwws
† Rwy 20 apch lgt 1500' nonstandard.

LOC FAF to MAP 4.7 NM					
Knots	60	90	120	150	180
Min:Sec	4:42	3:08	2:21	1:53	1:34

SE-3, 22 FEB 2024 to 21 MAR 2024

SE-3, 22 FEB 2024 to 21 MAR 2024

ILS X or LOC X RWY 20